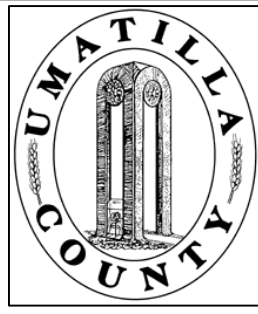


This map was prepared for Assessment purposes only.



SW1/4 SW1/4 SEC 9 T 4N R 28E WM 3/16/04

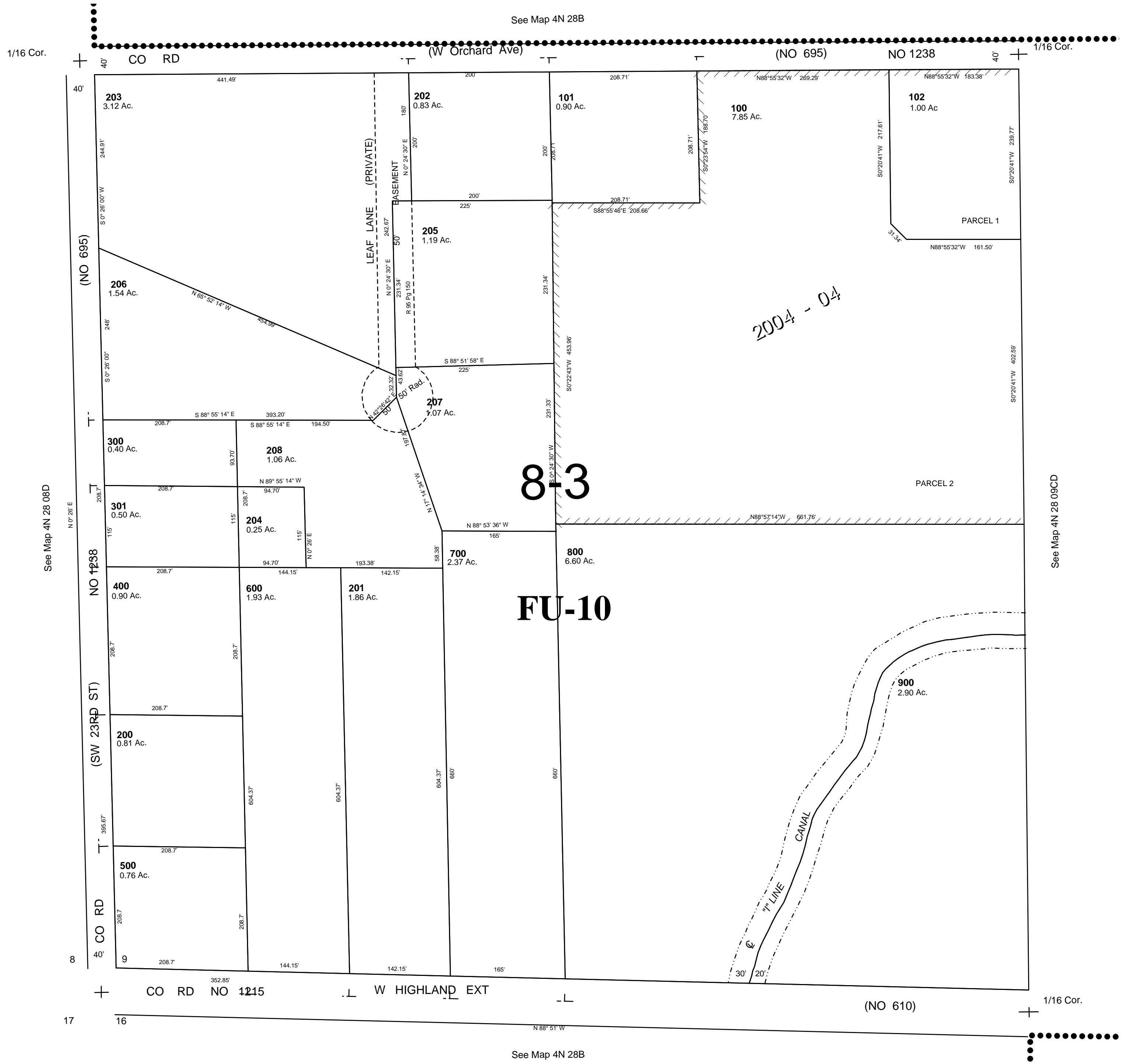
UMATILLA COUNTY, OR

SCALE: 1" = 100'

4N 28 09CC

AERIAL PHOTO NO. NZ-1P-120

Hermiston Urban Growth Area
All in Butter Creek Critical Ground Water Area



4N 28 09CC