

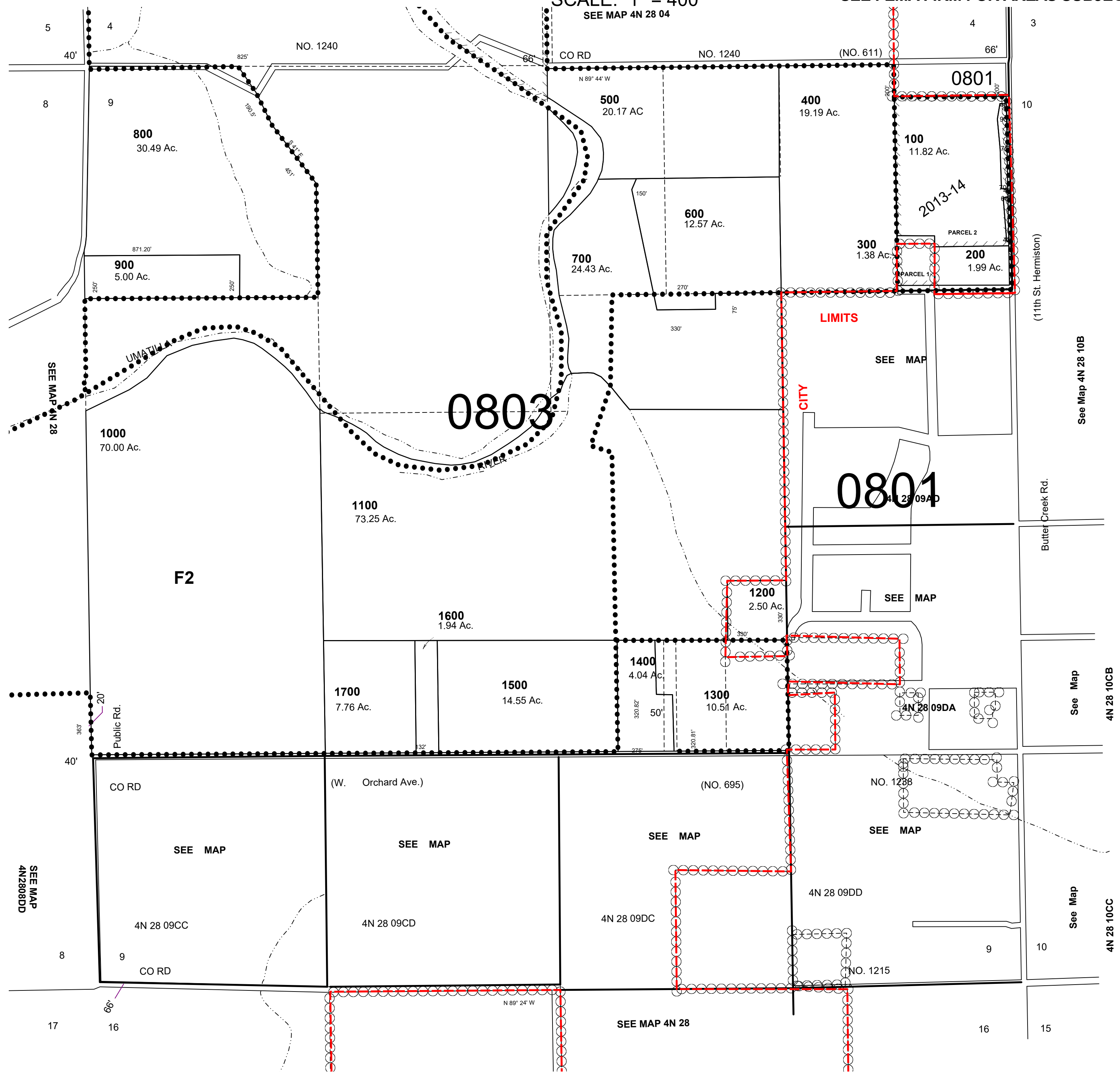
This map was prepared for Assessment & Taxation purposes only and was NOT prepared nor is it suitable for legal, engineering or surveying purposes.

# SEC 9 T4N R28E WM UMATILLA COUNTY, OR

## 4N2809

HERMISTON CITY & UGA  
ALL IN CRITICAL GROUND WATER AREA  
SEE FEMA FIRM FOR AREAS SUBJECT TO FLOODING

SCALE: 1" = 400'  
SEE MAP 4N 28 04



REVISED: 04-02-2021

## 4N2809