

This map was prepared for assessment purposes

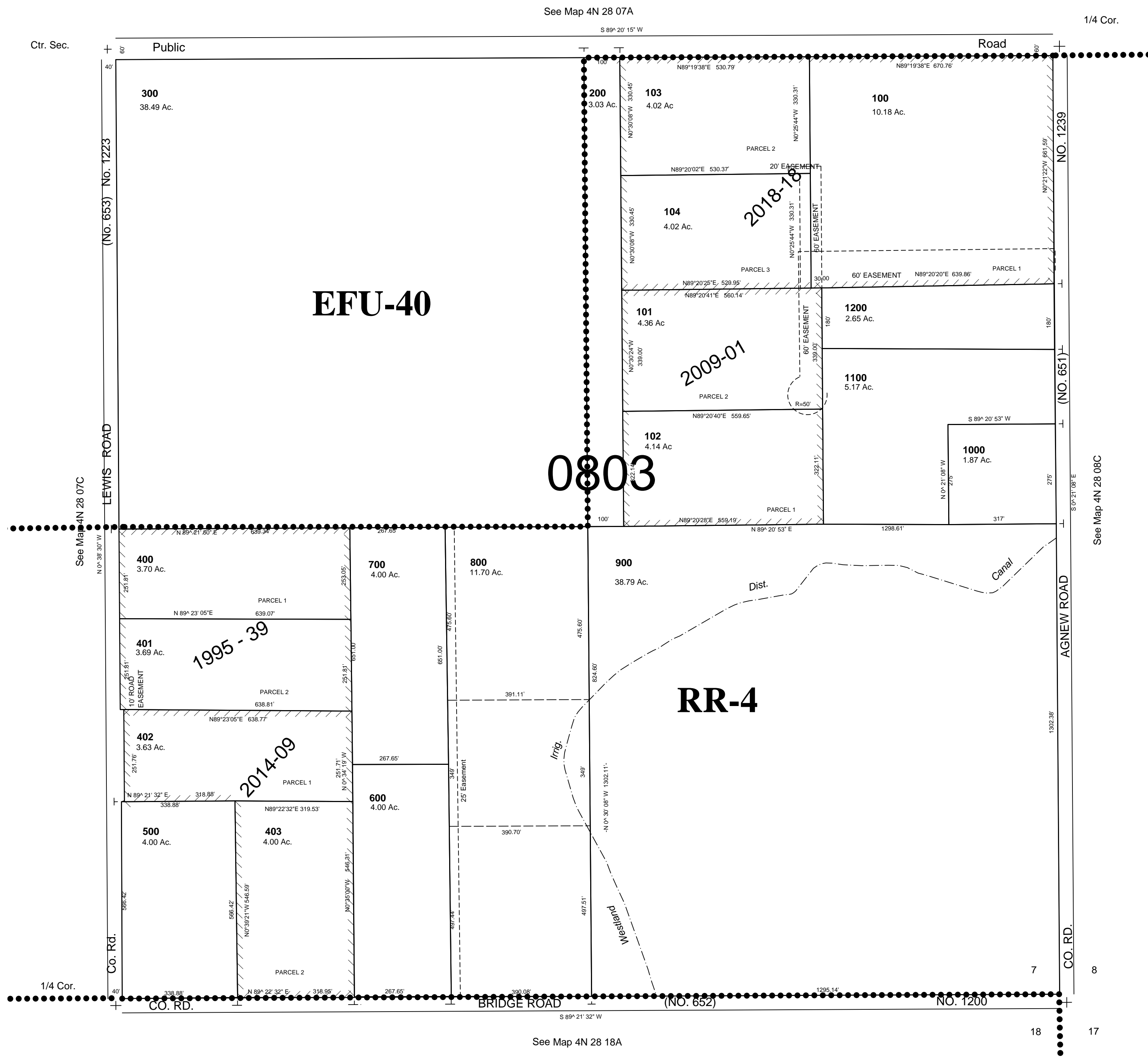
# SE1/4 SEC 7 T4N R28E WM UMATILLA COUNTY

1/15/19

4N 28 07D

SCALE 1"=200"

All in Butter Creek/Ordance Gravel Critical Ground Water Area



See Map 4N 28 07A

1/4 Cor.

Ctr. Sec.

Public

Road

EFU-40

RR-4

0803

1995-39

2014-09

2018-18

2009-01

See Map 4N 28 07C

See Map 4N 28 08C

See Map 4N 28 18A

4N 28 07D