

This map was prepared for assessment purposes

NE1/4 SEC 7 T4N R28E WM UMATILLA COUNTY

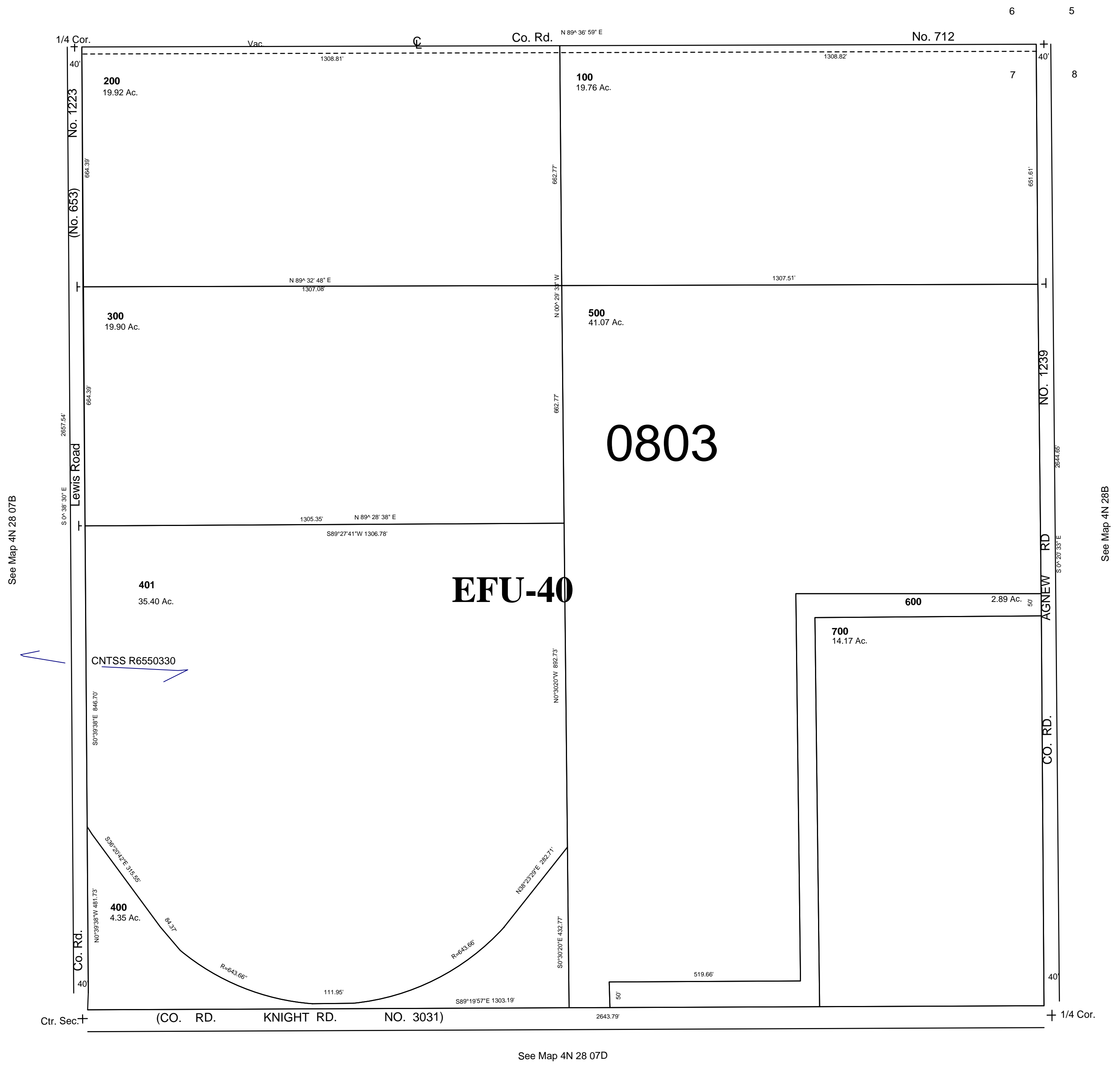
2/22/05

4N 28 07A

1"=200

All in Ordnance Gravel & Butter Creek CGW Areas

See Map 4N 28B



See Map 4N 28 07B

See Map 4N 28 07D

4N 28 07A