

This map was prepared for Assessment & Taxation purposes only and has not been prepared for legal, engineering or surveying purposes.

SW1/4 NW1/4 SEC 2 T4N R28E WM

1/19/21

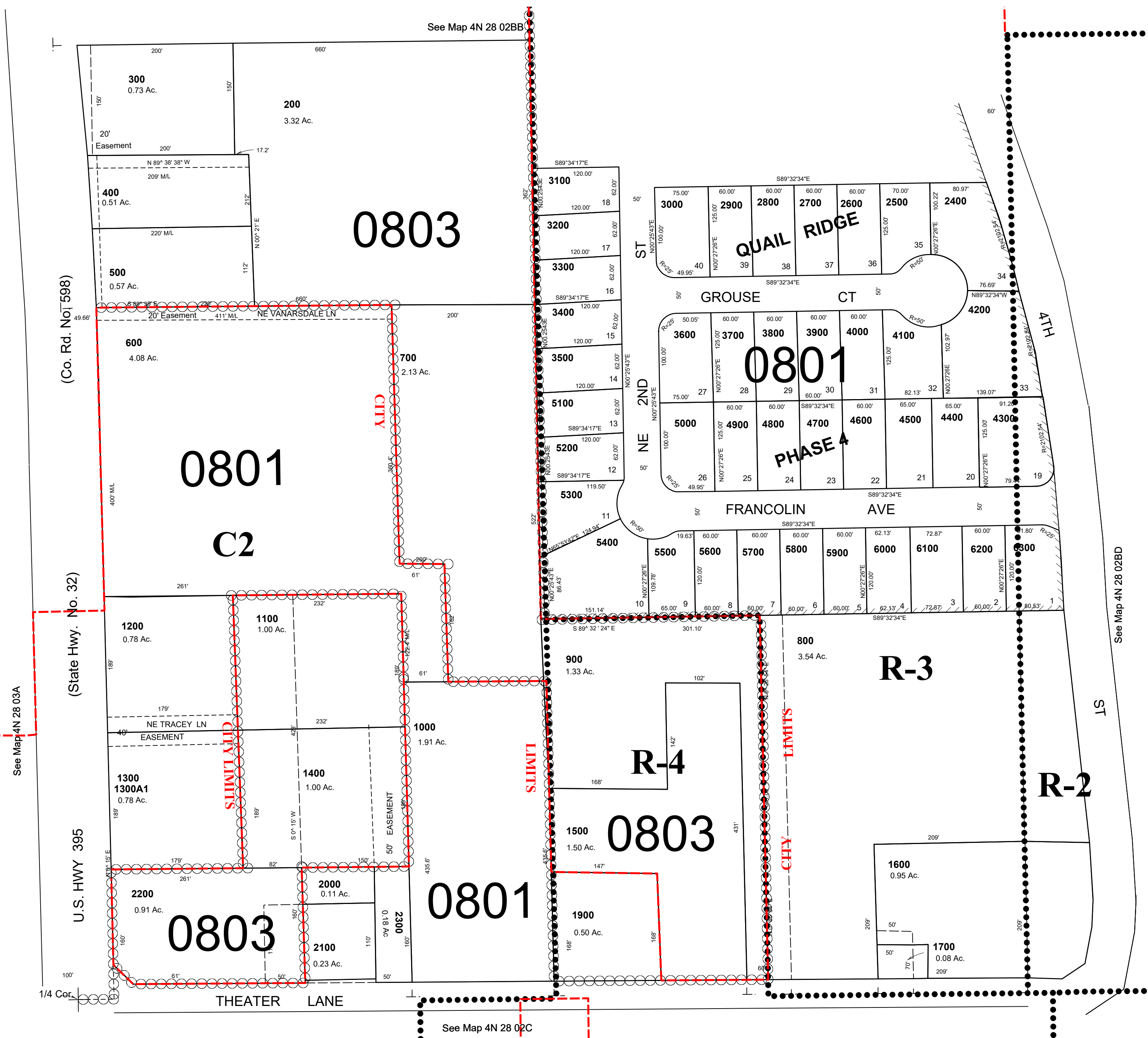
4N 28 02BC

UMATILLA COUNTY

AERIAL PHOTO NO. 1P-122

SCALE 1"=100'

Hermiston City & Urban Growth Area



4N 28 02BC