

This map was prepared for assessment purposes

SE1/4 SEC 1 T4N R28E WM UMATILLA COUNTY

8/16/05

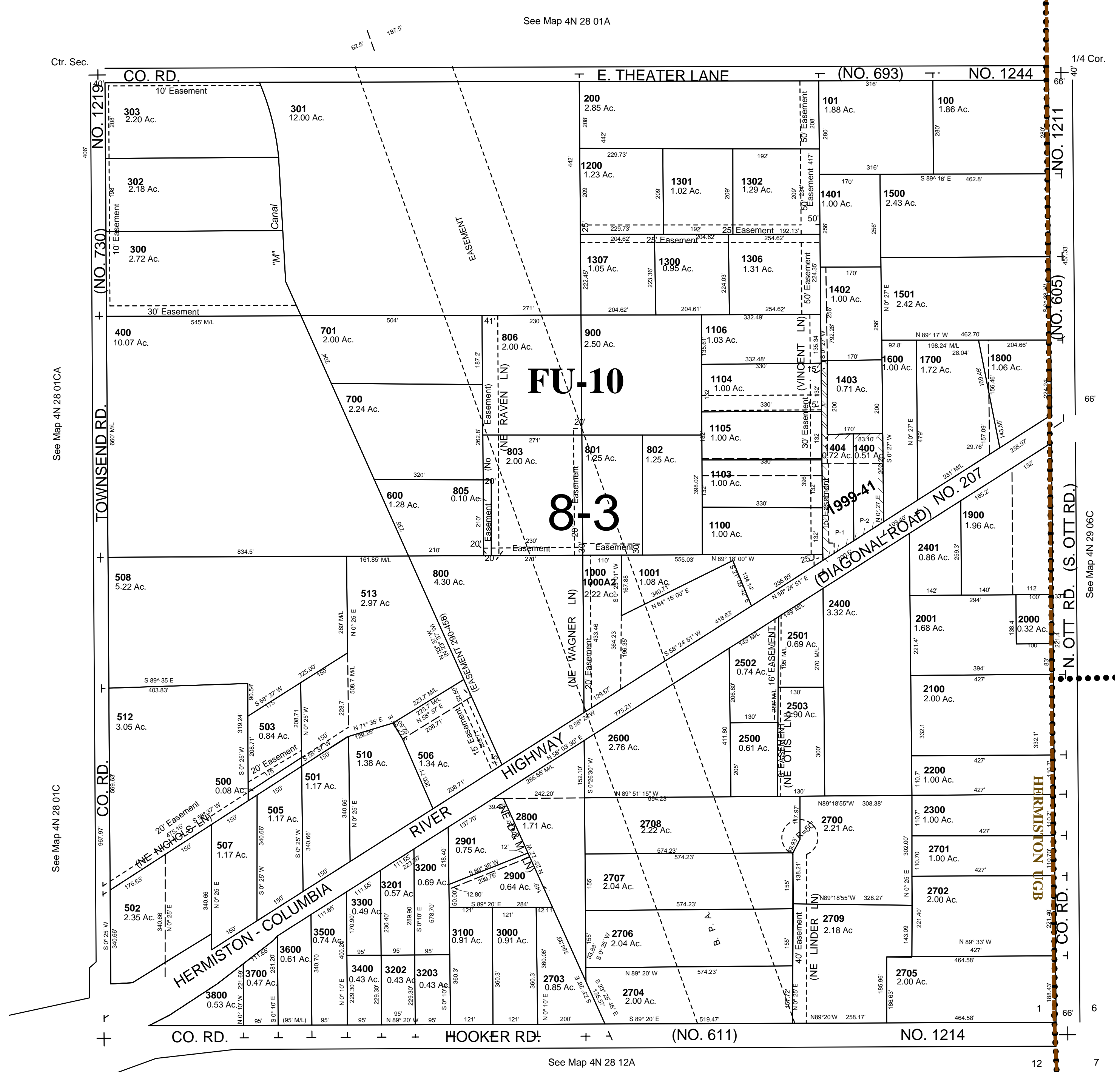
4N 28 01D

AERIAL PHOTO NO. NZ 1P-123

1"=200'

HERMISTON URBAN GROWTH AREA

All in Airport Hazard Overlay Zone



4N 28 01D