

This map was prepared for assessment purposes

NW1/4 SW1/4 T5NR28E WM
UMATILLA COUNTY
SCALE 1"=100'

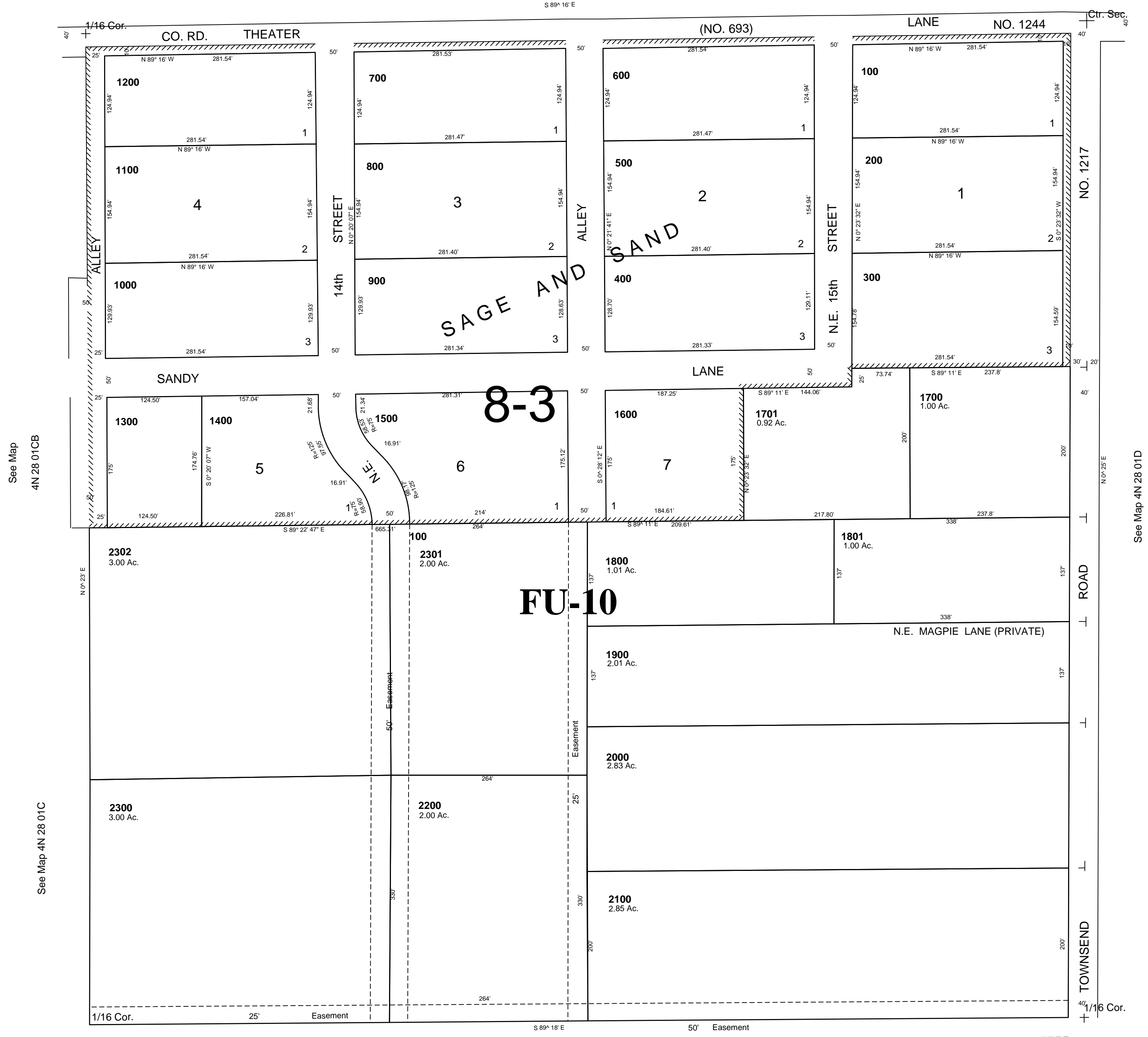
3/29/06

4N 28 01CA

AERIAL PHOTO NO. 1P-123

HERMISTON URBAN GROWTH AREA

See Map 4N 28 01B



4N 28 01CA

See Map 4N 28 01C