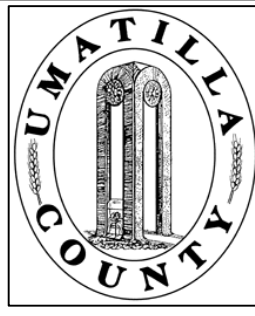


This map was prepared for Assessment purposes only.



NE1/4 SEC 1 T 4N R 28E WM UMATILLA COUNTY, OR

3/15/04

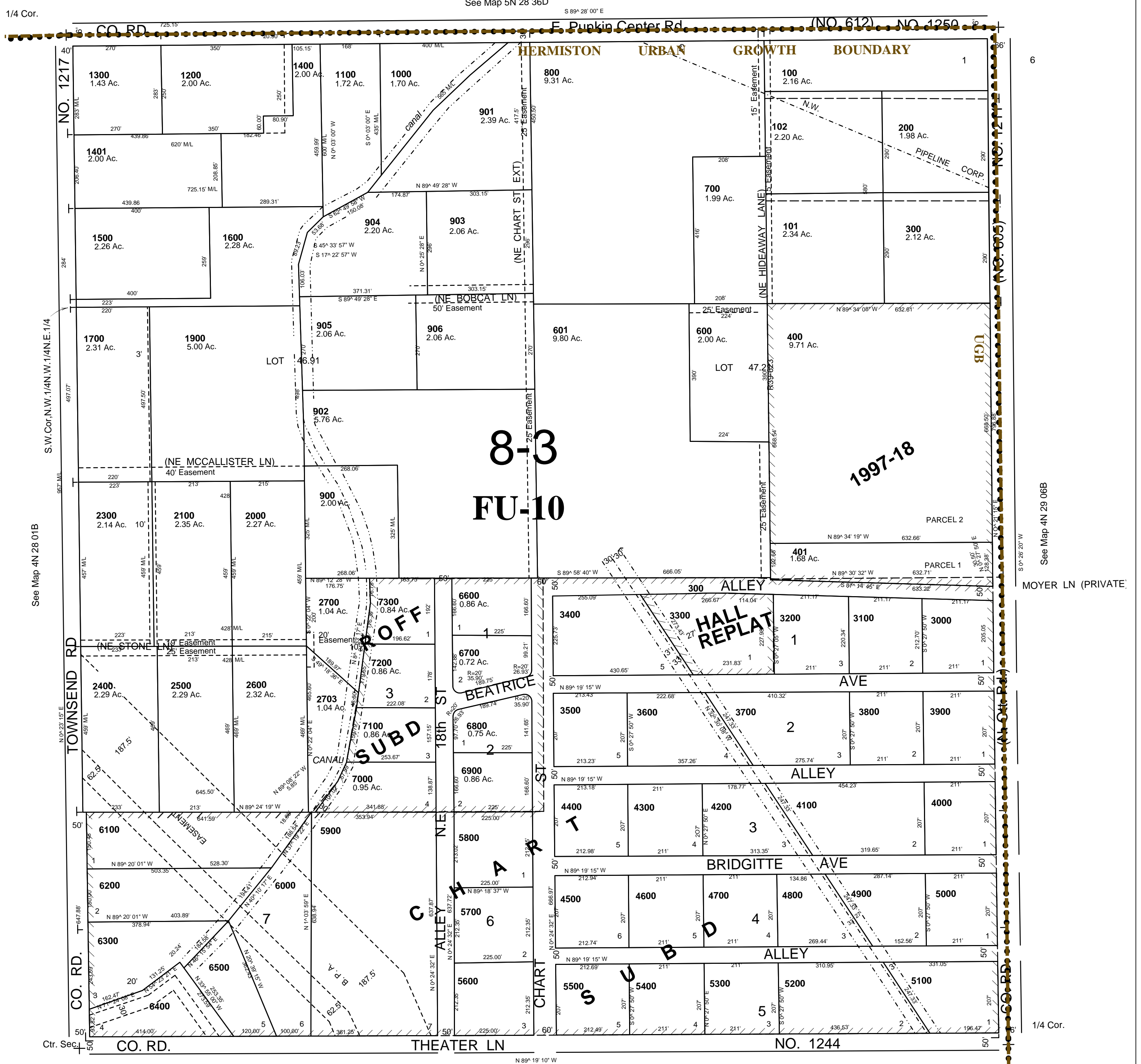
4N 28 01A

AERIAL PHOTO NO. NZ-1P-124

HERMIESTON URBAN GROWTH AREA

SCALE: 1" = 200'

All in Airport Hazard Overlay Zone



4N2801A