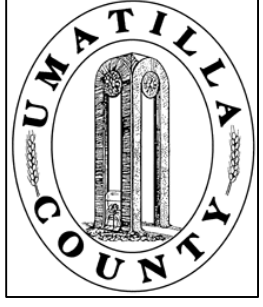


This map was prepared for Assessment purposes only.



NE1/4 SEC 25 T 4N R 27E WM

2/26/21

4N2725A

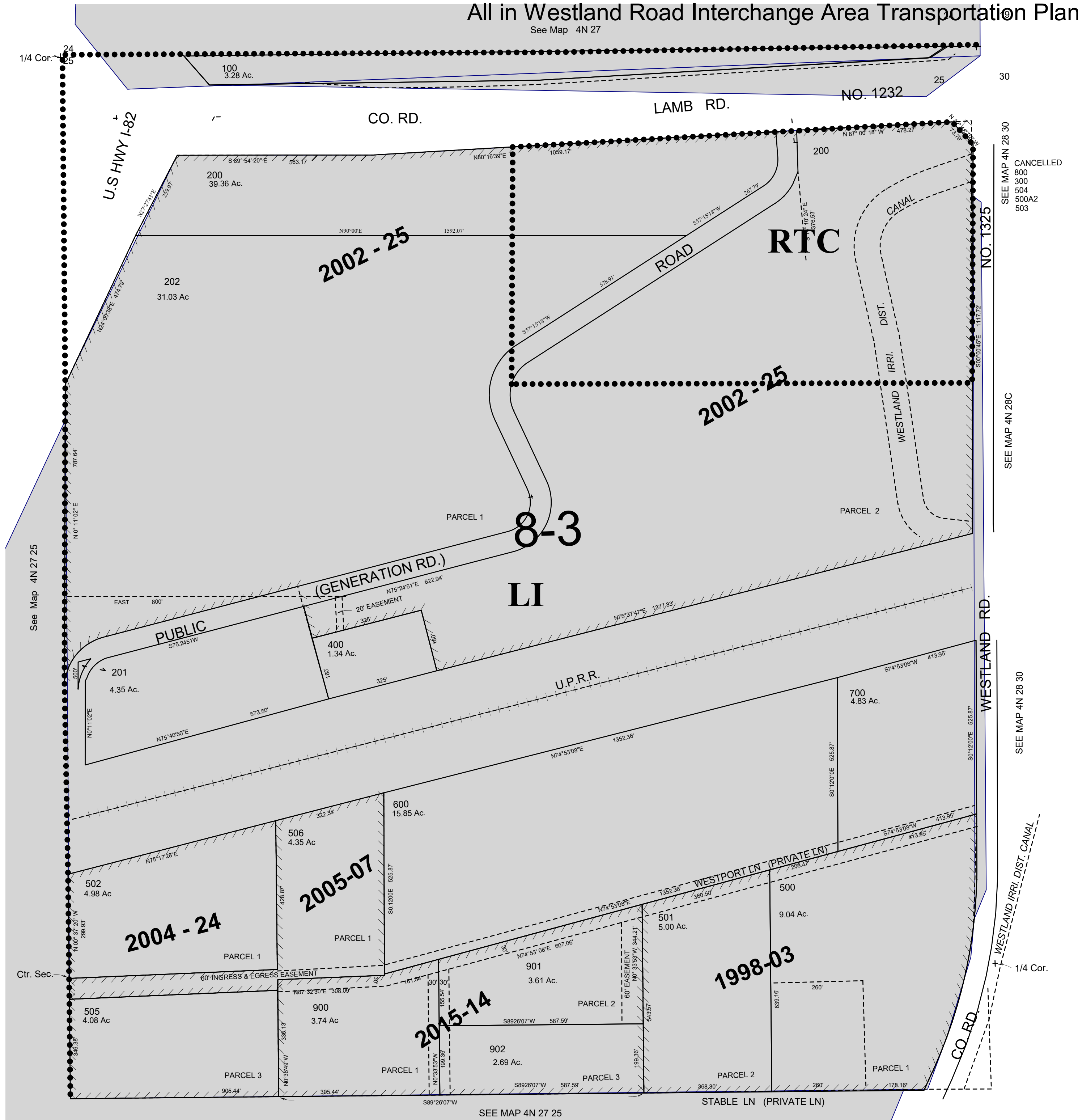
UMATILLA COUNTY, OR

All in Ordance Gravel Critical Ground Water Area

SCALE: 1" = 200'

All in Westland Road Interchange Area Transportation Plan

See Map 4N 27



4N2725A

SEE MAP 4N 28 30
CANCELLED
800
900
504
500A2
503

SEE MAP 4N 28 C

SEE MAP 4N 28 30

SEE MAP 4N 28 30

SEE MAP 4N 27 25