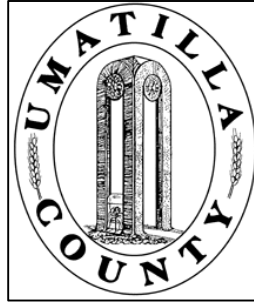


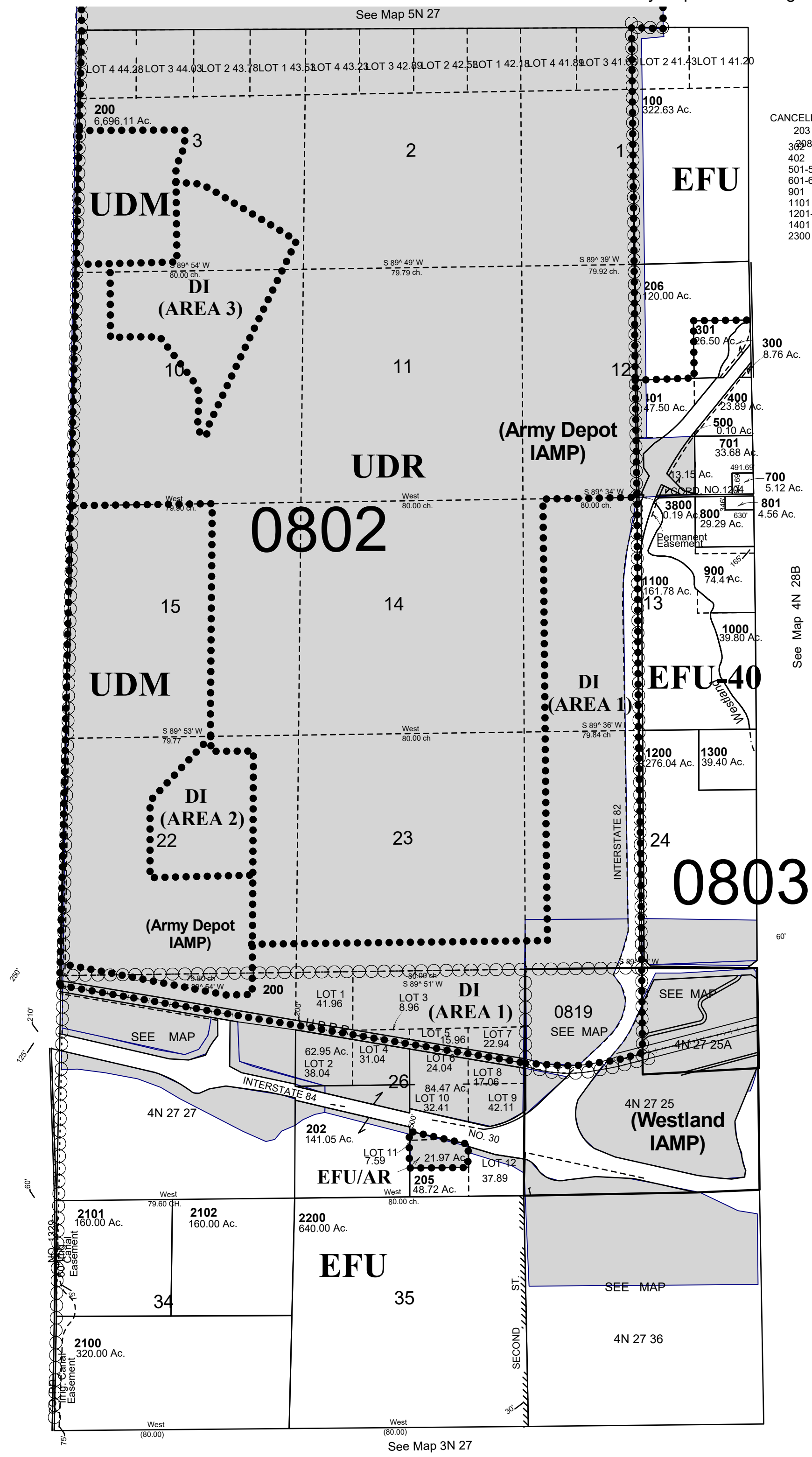
This map was prepared for Assessment purposes only.



T4N R27E WM  
UMATILLA COUNTY, OR  
SCALE: 1" = 2000'

3/18/20

**4N 27**  
Aerial Photo No. NZ-1P-116-118  
2P-27-29 & 2P-36-38  
All in Critical Ground Water Areas  
Westland Rd/I-84 Interchange Area Transportation Plan  
I-84/Army Depot Interchange Area Management Plan



4N 27