

This map was prepared for assessment purposes

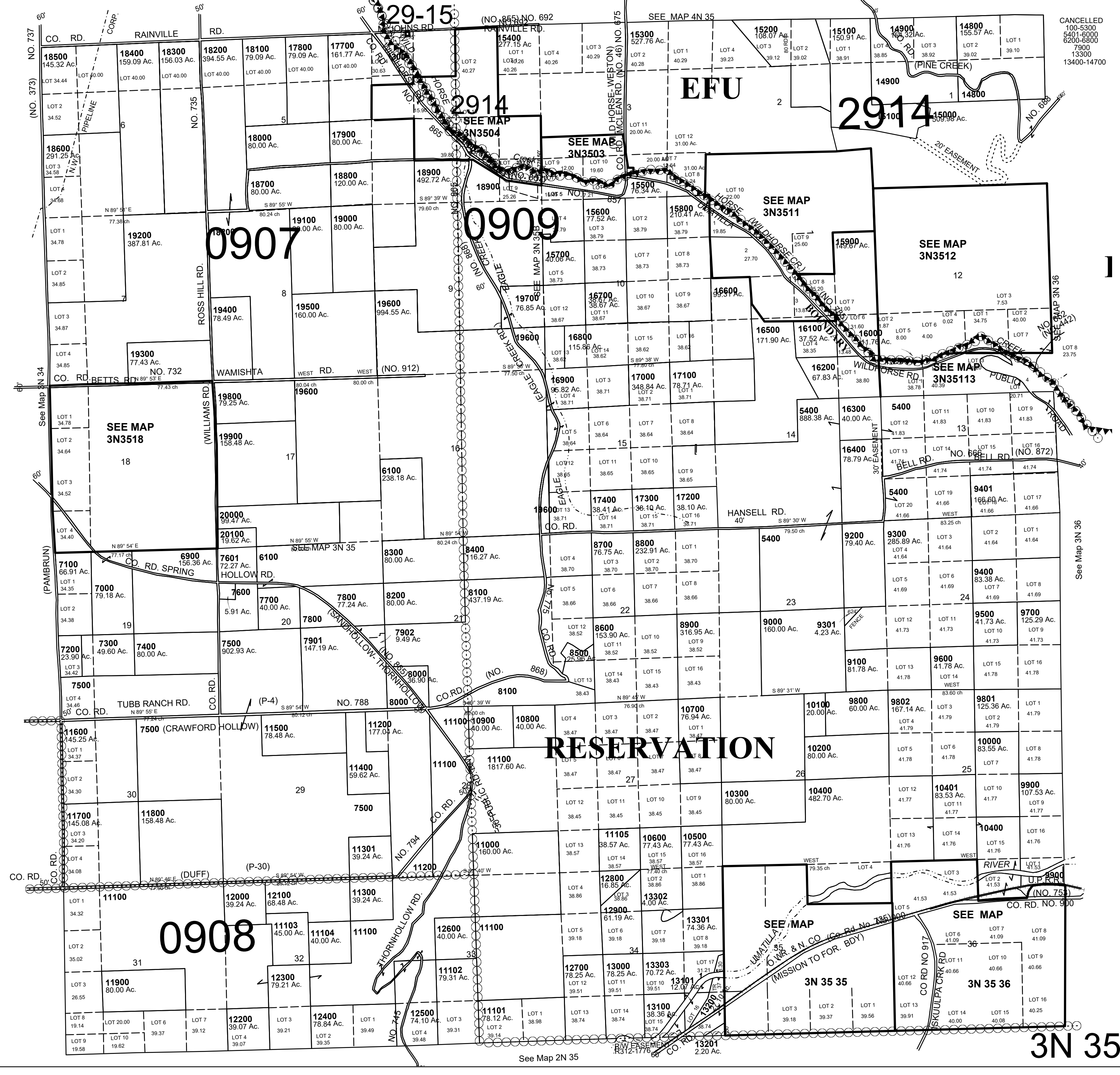
SCALE
1" = 2000'

T3N R35E WM UMATILLA COUNTY

4/26/21

3N 35
AERIAL PHOTO NO. NZ 3P 161-165, 4P 128-132 & 148-153

CANCELLED
100-5300
600-8800
7000
13300
13400-14700



See Map 2N 35

3N 35