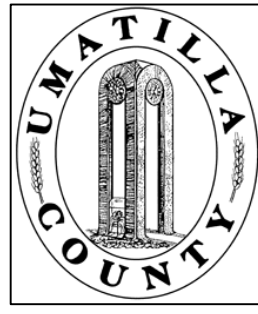


This map was prepared for Assessment purposes only.



NW1/4 SW1/4 SEC 3 T3N R34E WM UMATILLA COUNTY, OR

SCALE: 1" = 100'

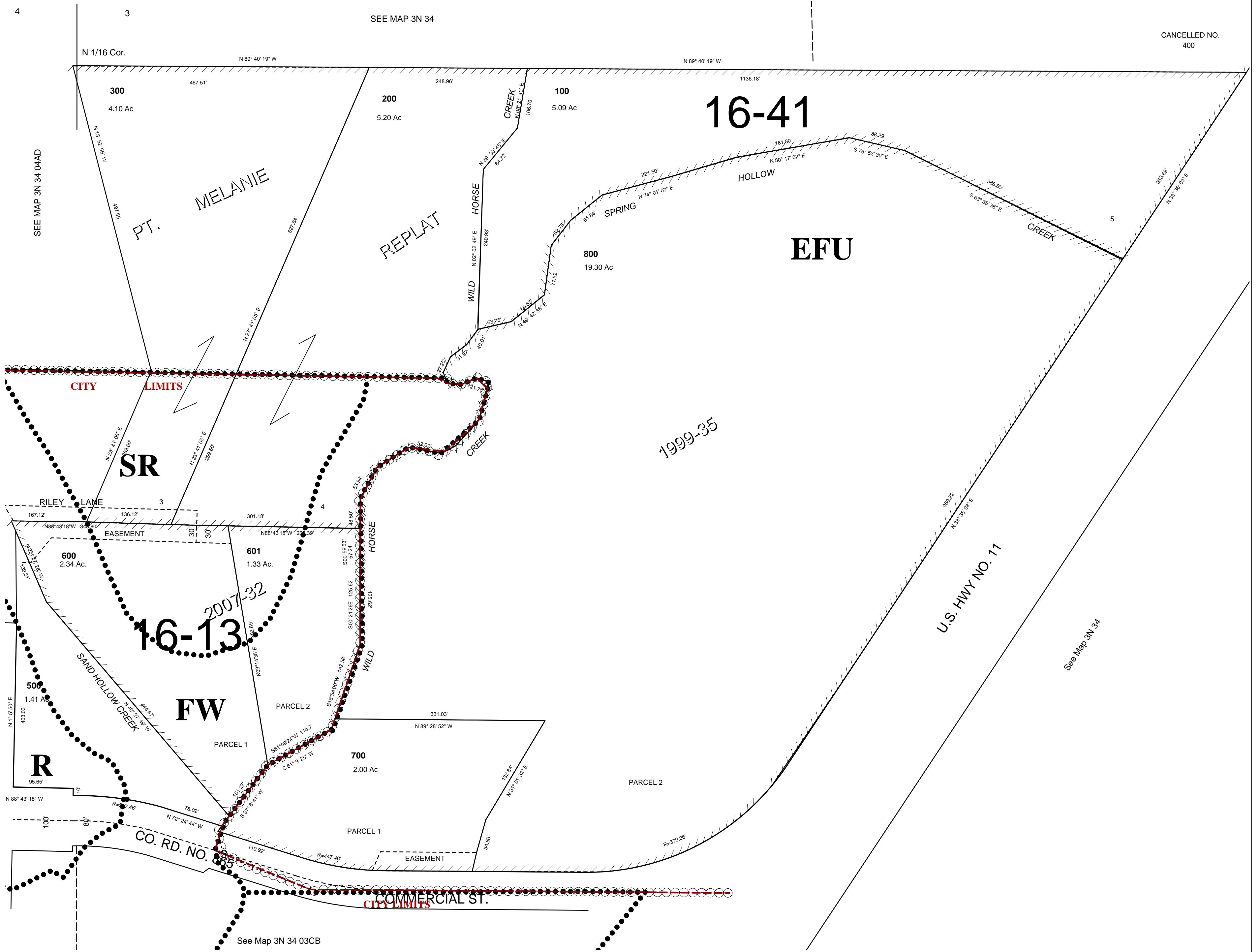
7/28/04

3N 34 03BC

P/O CITY OF ADAMS

See FIRM for areas subject to flooding

CANCELLED NO.
400



3N 34 03BC