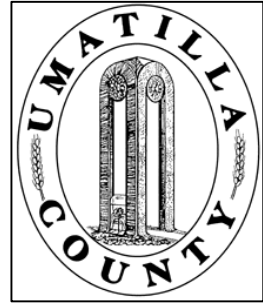


This map was prepared for Assessment and Taxation purposes only and has NOT been prepared for legal, engineering, or surveying purposes.



# NW1/4 SE1/4 SEC 16 T3N R29E WM UMATILLA COUNTY, OR

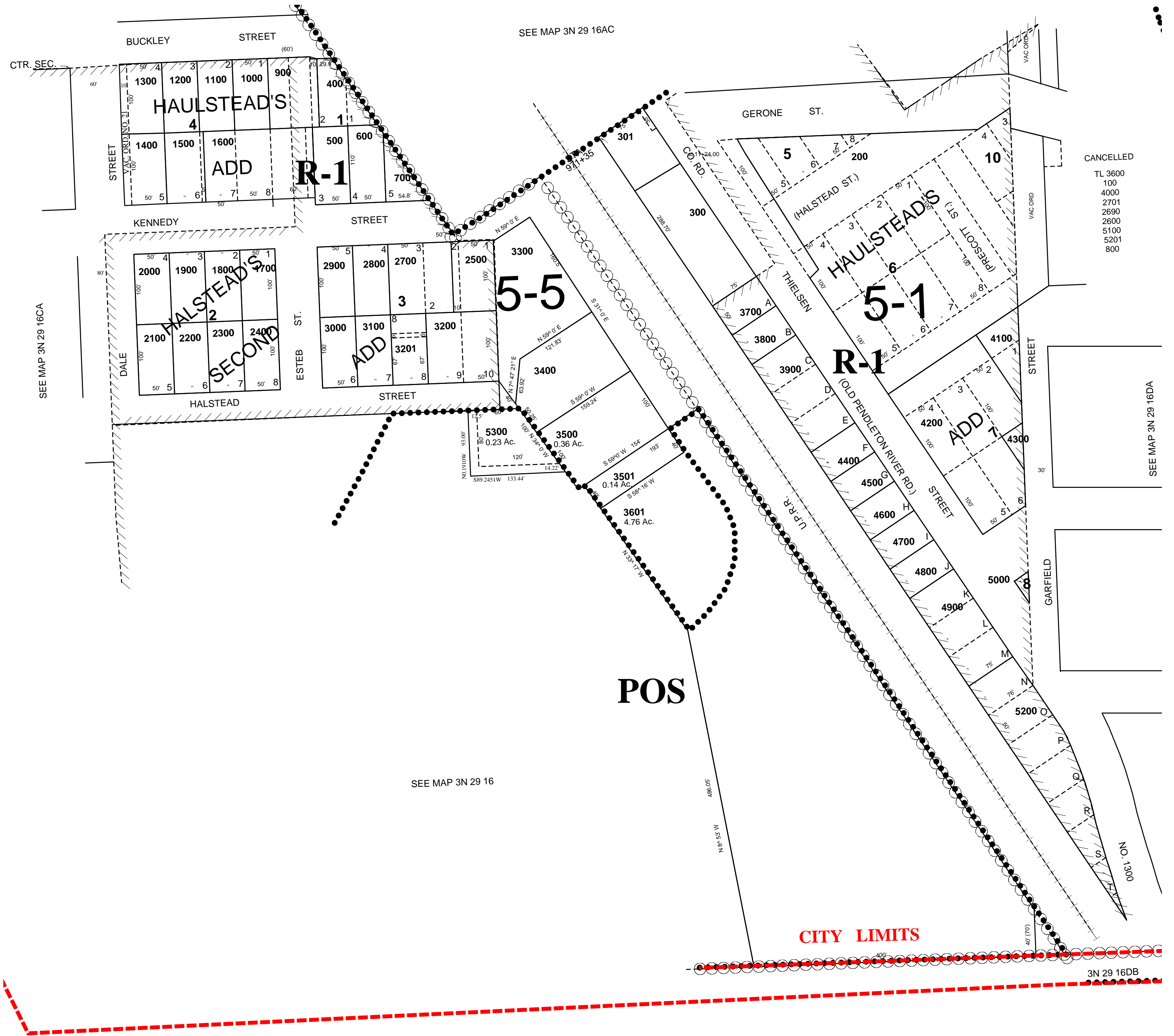
SCALE: 1" = 100'

## 3N2916DB

Aerial Photo No NZ\_2P-111

CITY OF ECHO

See FEMA FIRM for areas subject to flooding



Revised 07-09-12

## 3N2916DB