

This map was prepared for assessment purposes

NW1/4 SW1/4 SEC 16 T3N R29E WM

9/13/06

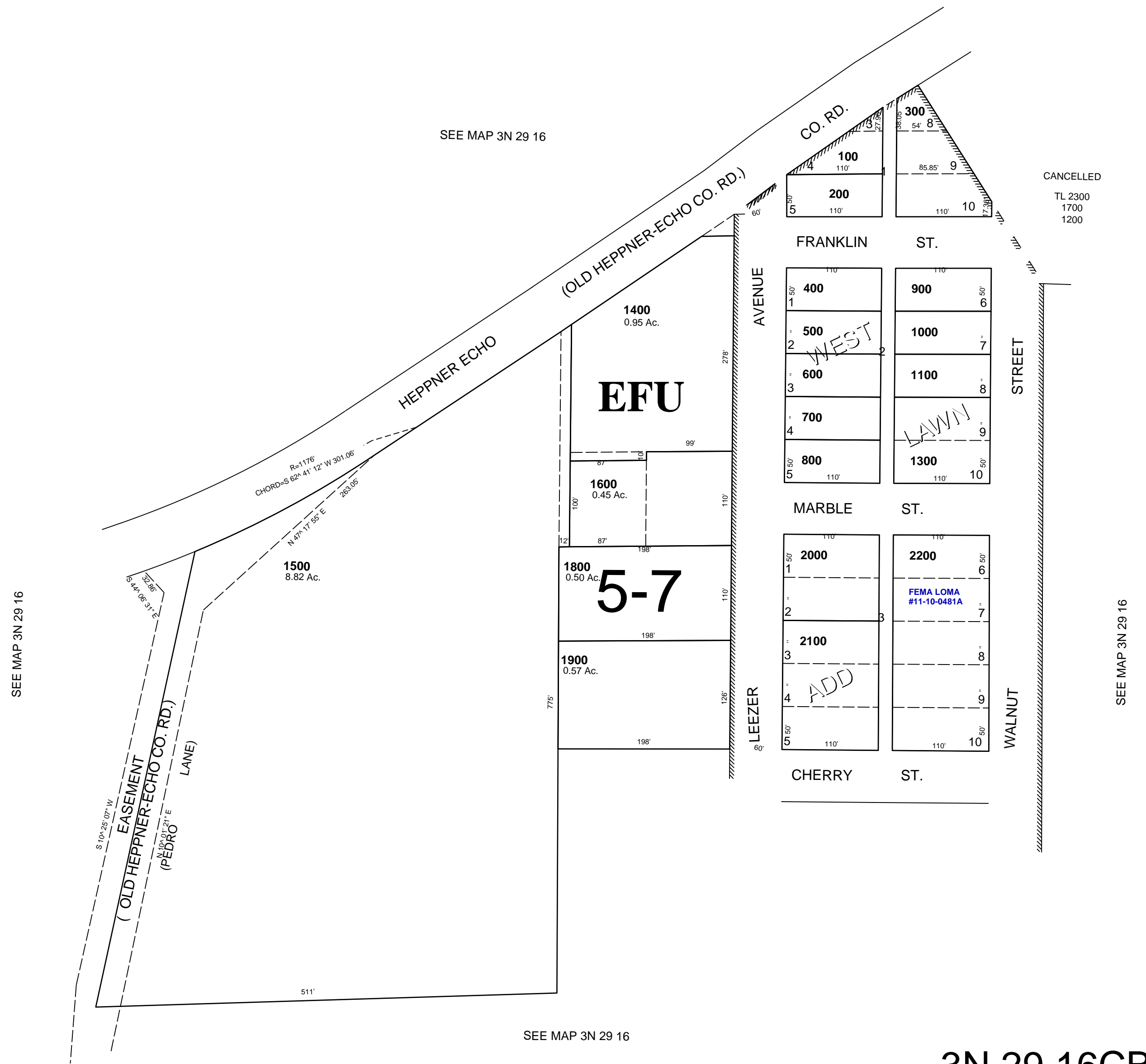
3N 29 16CB

UMATILLA COUNTY

AERIAL PHOTO NO. 2P-111

SCALE 1"=100'

See FIRM for areas subject to flooding
All in Stage Gulch CGWater area



3N 29 16CB