

This map was prepared for Assessment & Taxation purposes only and was NOT prepared nor is it suitable for legal, engineering or surveying purposes.

SW 1/4 NE 1/4 T3N R16E WM UMATILLA COUNTY

3N2916AC

AERIAL PHOTO NO. NZ-2P-111

CITY OF ECHO

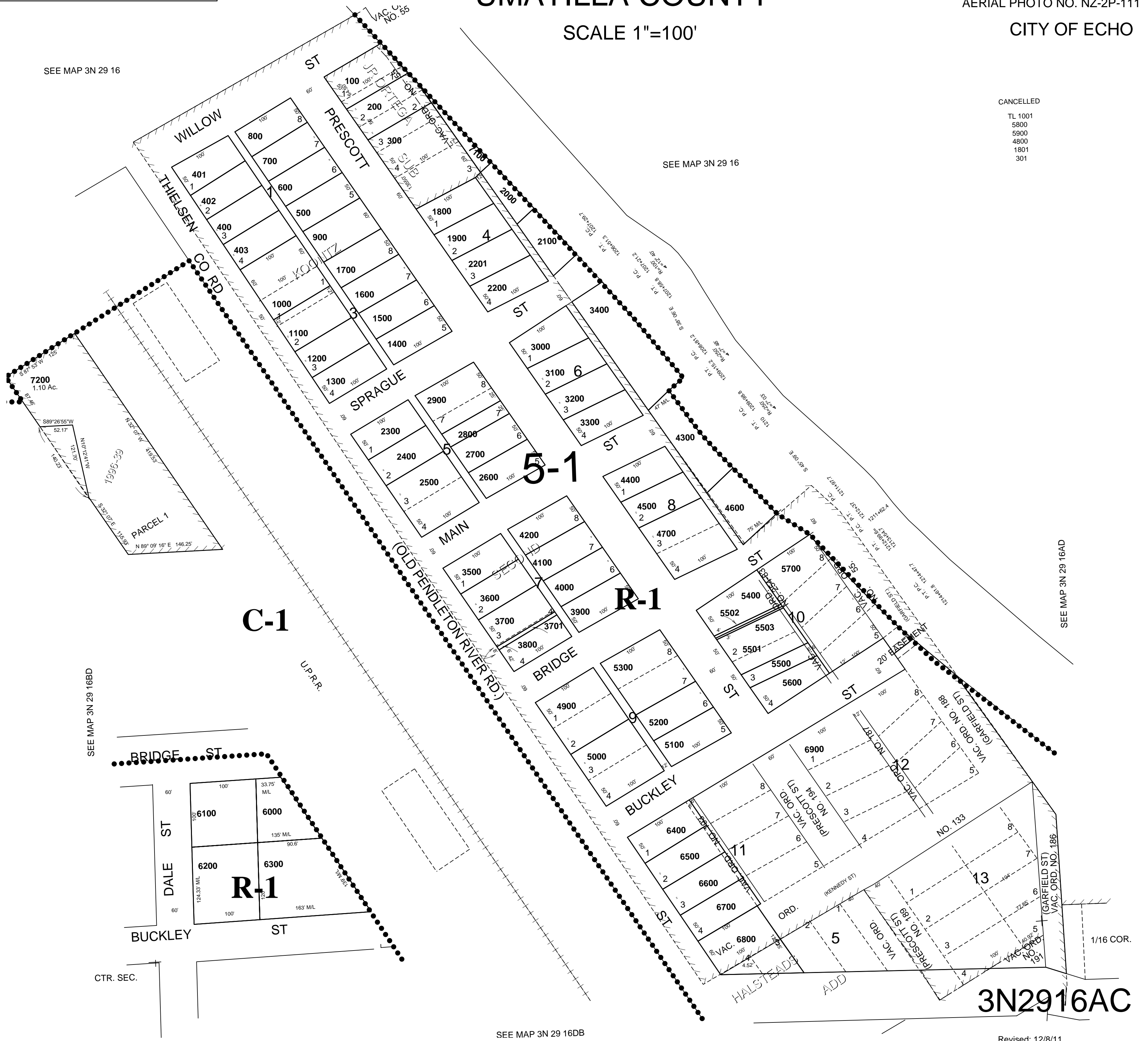
SCALE 1"=100'

SEE MAP 3N 29 16

SEE MAP 3N 29 16

CANCELLED

- TL 1001
- 5800
- 5900
- 4800
- 1801
- 301



3N2916AC

Revised: 12/8/11