

This map was prepared for Assessment and Taxation purposes only and has NOT been prepared for legal, engineering or surveying purposes.

SW1/4 SEC 3 T2N R34E WM UMATILLA COUNTY

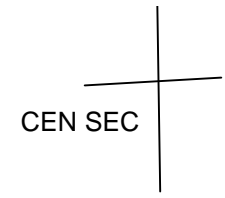
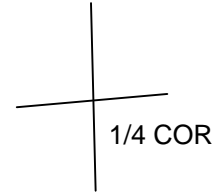
SCALE 1"=200'

6/5/07

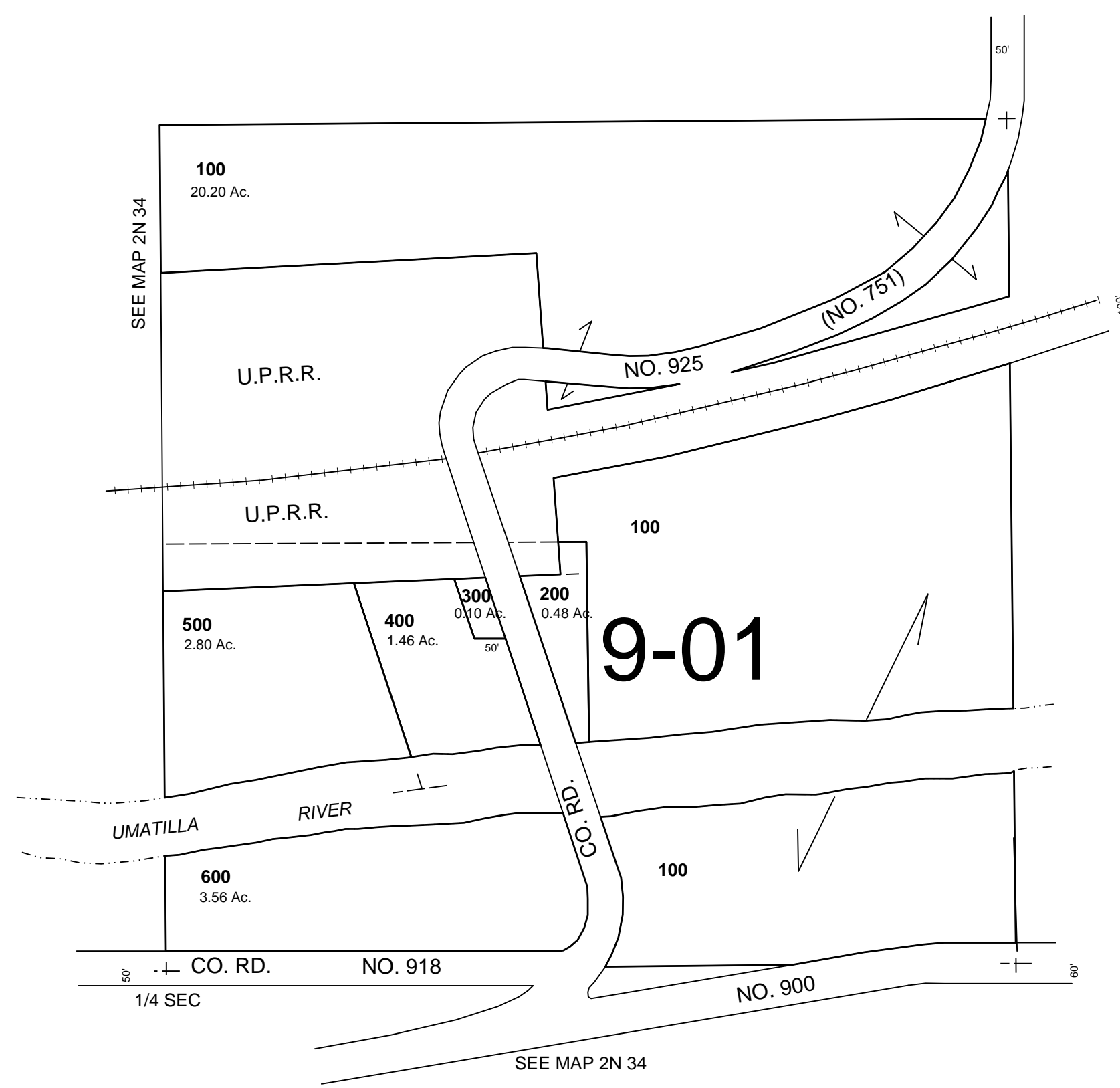
2N 34 03C

AERIAL PHOTO NO. 4P 39-41, 68-71 & 91-95

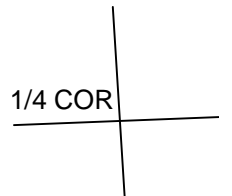
RESERVATION



SEE MAP 2N 34



SEE MAP 2N 34



2N 34 03C