

This map was prepared for Assessment & Taxation purposes only and was NOT prepared nor is it suitable for legal, engineering or surveying purposes.

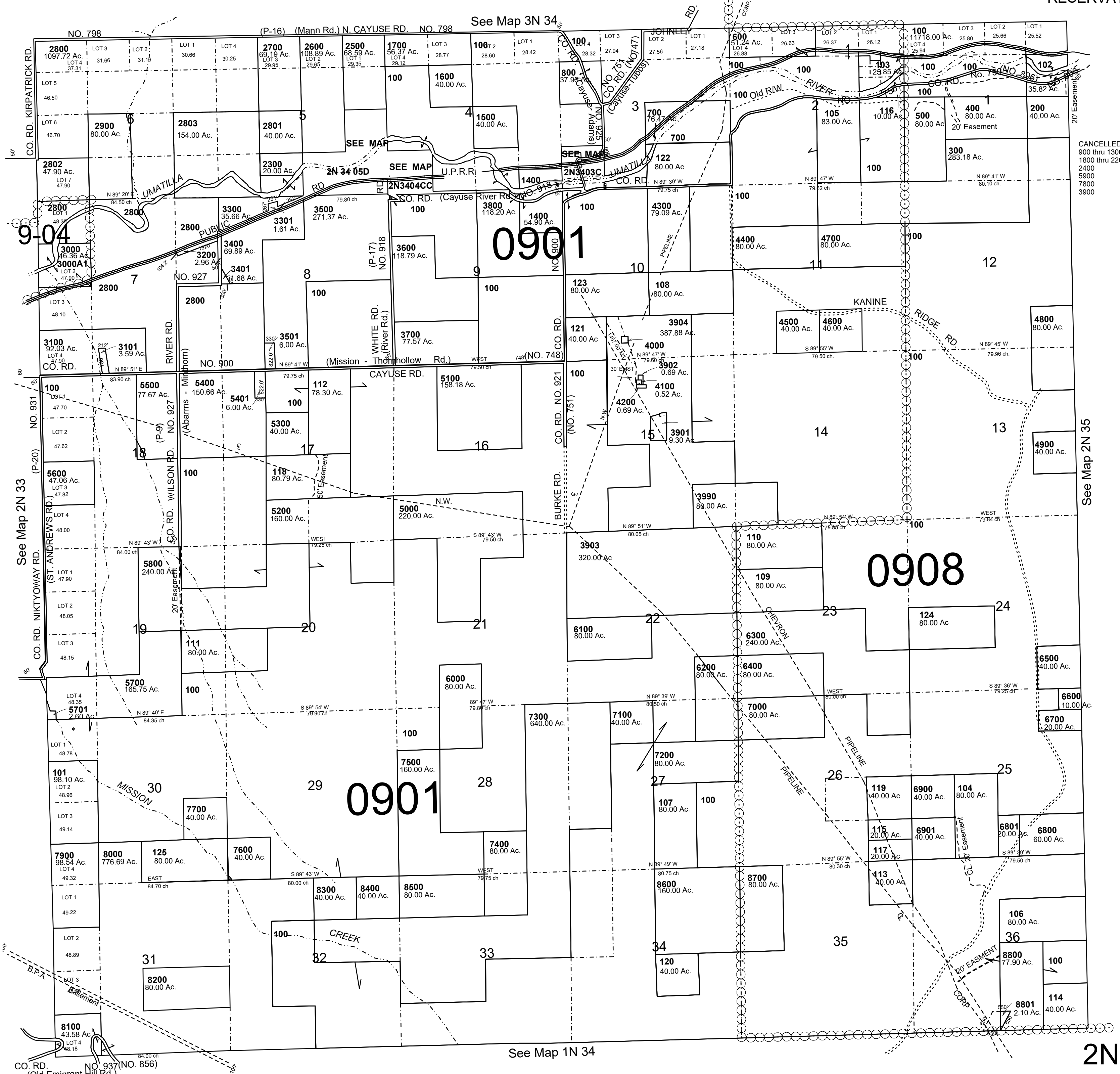
T2N R34E WM UMATILLA COUNTY

1" = 2000'

Revised: 12/02/2020

2N 34

AERIAL PHOTO NO. NZ 4P 39-41, 68-71 & 91-95
RESERVATION



2N 34