

This map was prepared for Assessment & Taxation purposes only and was NOT prepared nor is it suitable for legal, engineering or surveying purposes.

NW1/4 SW1/4 SEC 08 T2N R33E WM

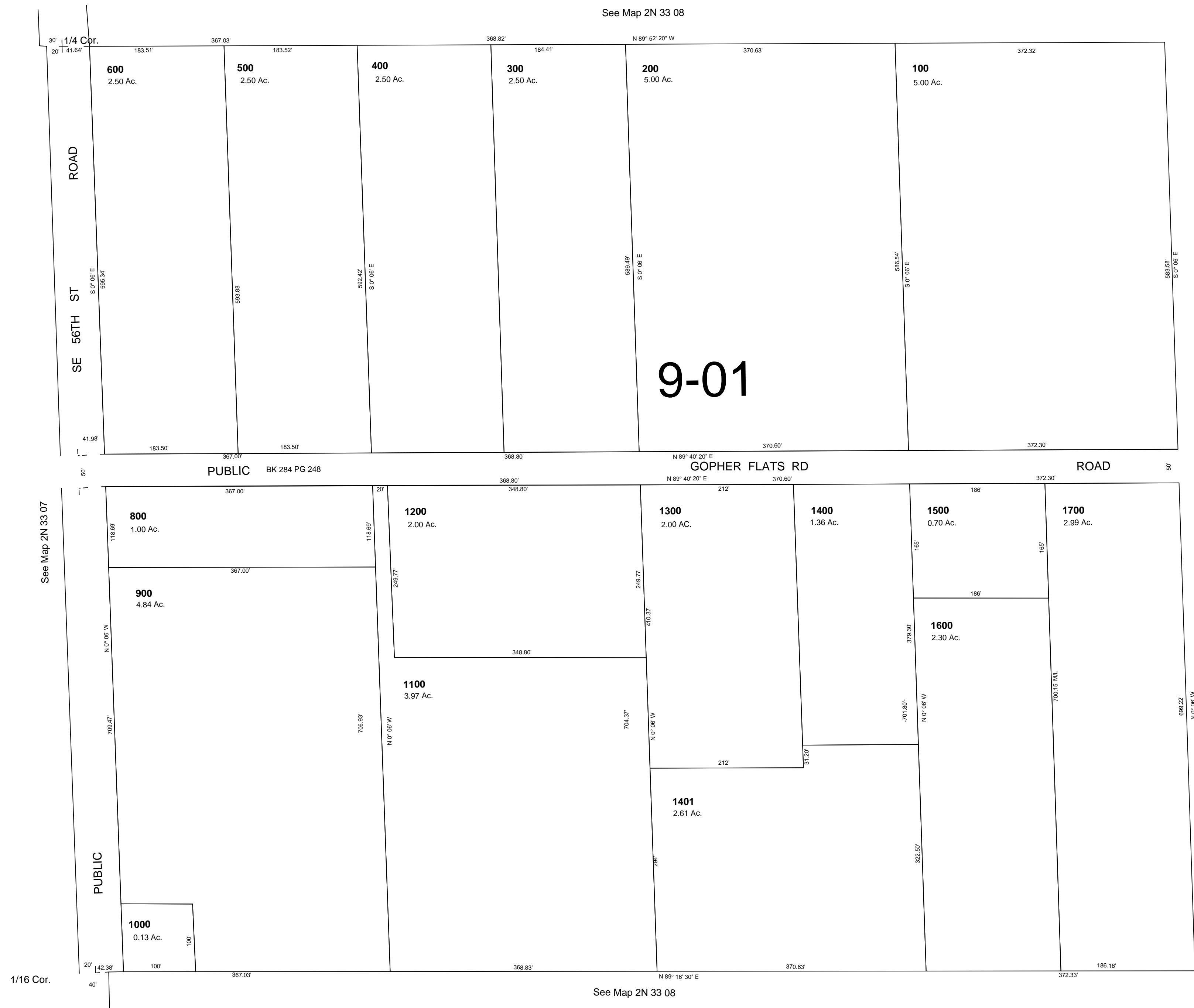
2N 33 08CB

UMATILLA COUNTY

Aerial Photo No. 4P-100

SCALE 1"=100'

RESERVATION



9-01

Revised: 8/17/09

2N 33 08CB