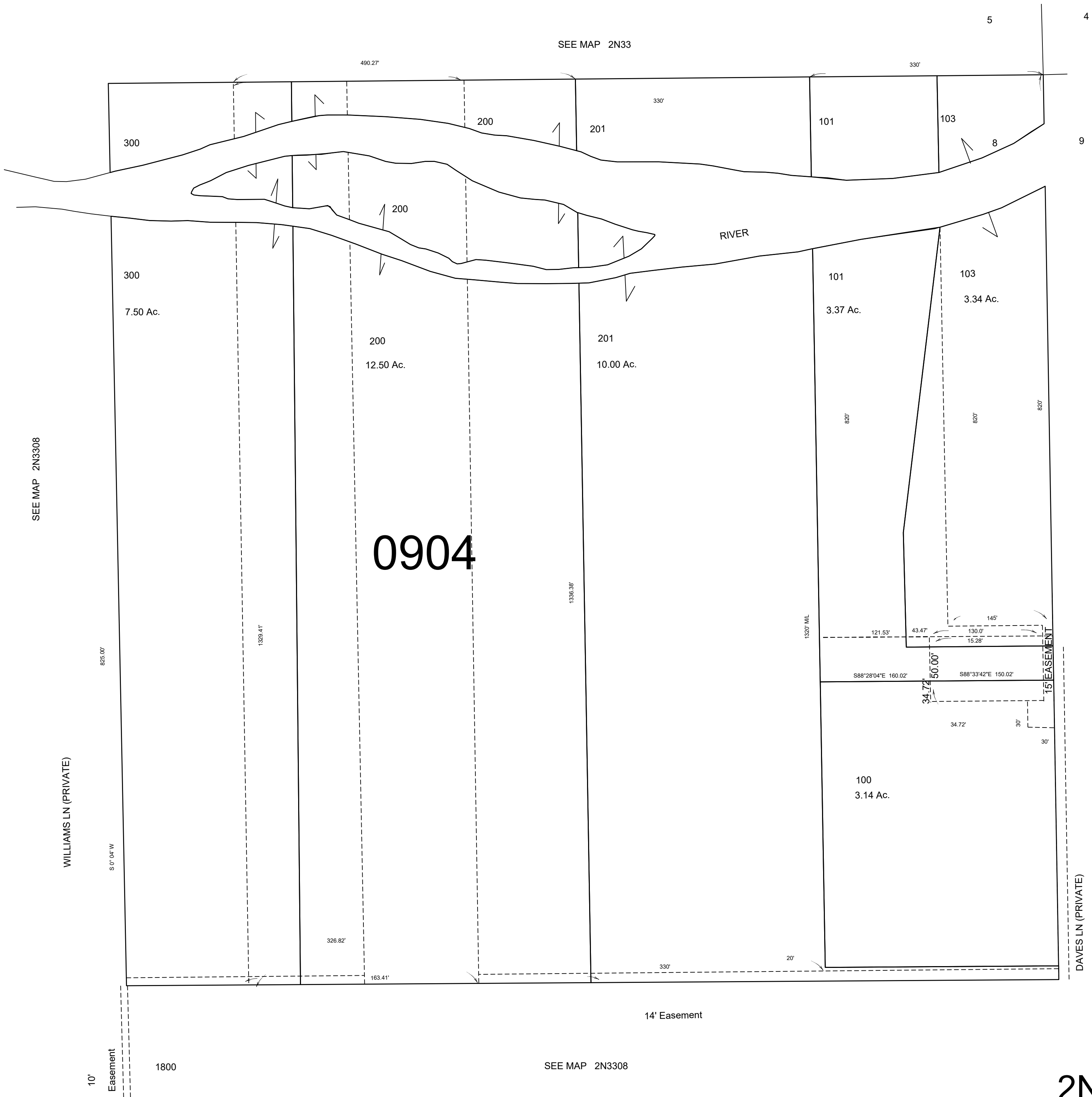


This map was prepared for Assessment & Taxation purposes only and has not been prepared or is it suitable for legal, engineering or surveying purposes.

NE1/4 NE1/4 SEC 8 T2N R33E WM UMATILLA COUNTY

2N3308AA RESERVATION

SCALE 1"=100'



REVISED 10-09-20

2N3308AA