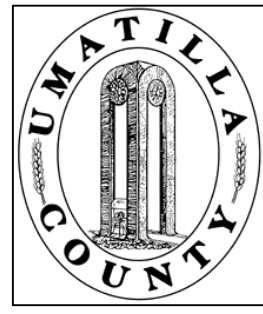


This map was prepared for Assessment and Taxation purposes only and has NOT been prepared for legal, engineering or surveying purposes.



SW1/4 NE1/4 SEC 07 T2N R33E WM UMATILLA COUNTY, OR

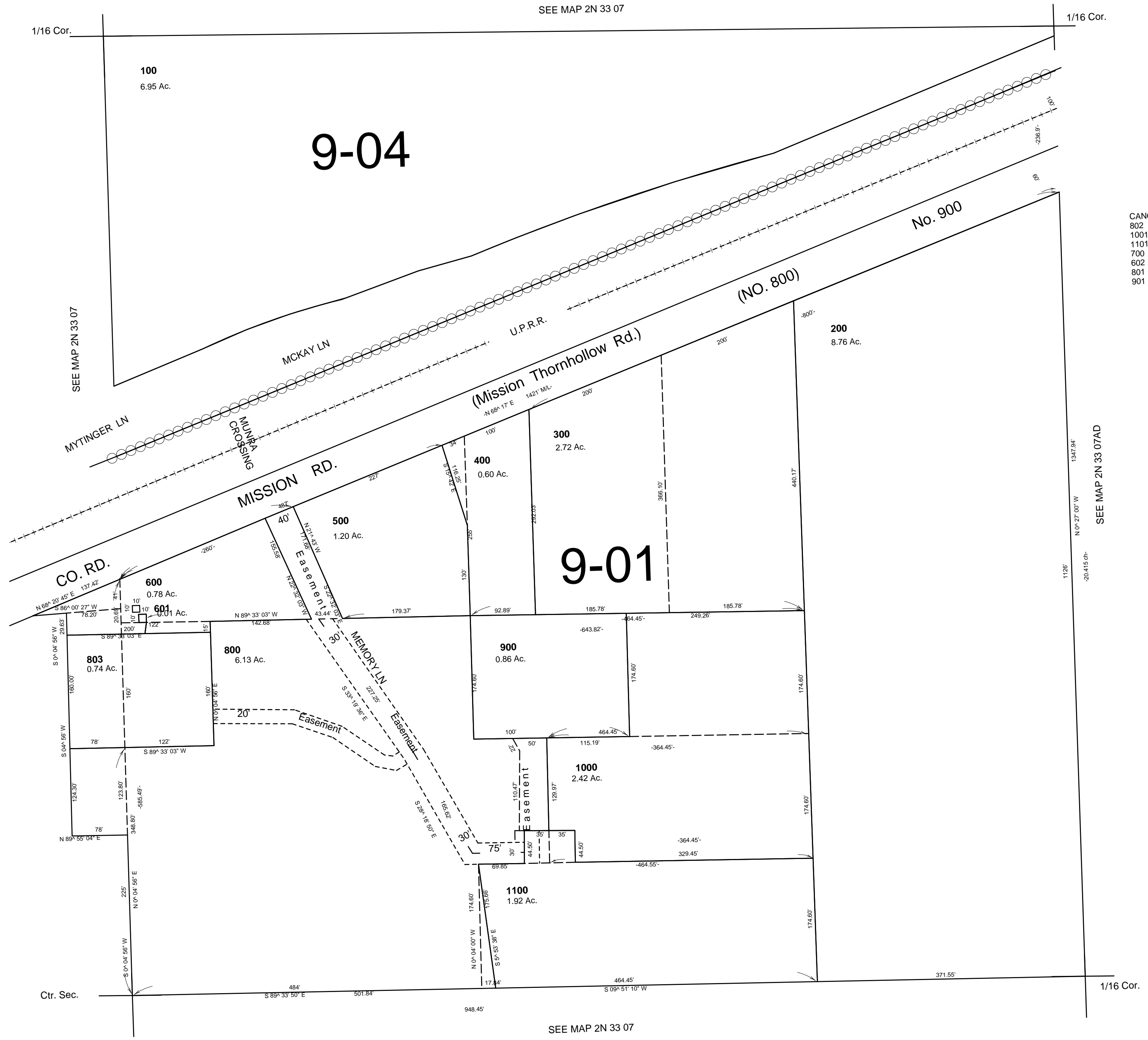
06/17/03

2N3307AC

Aerial Photo No. NZ-4P-101

SCALE: 1" = 100'

RESERVATION



CANCELLED
802
1001
1101
700
602
801
901

SEE MAP 2N 33 07AD

2N3307AC