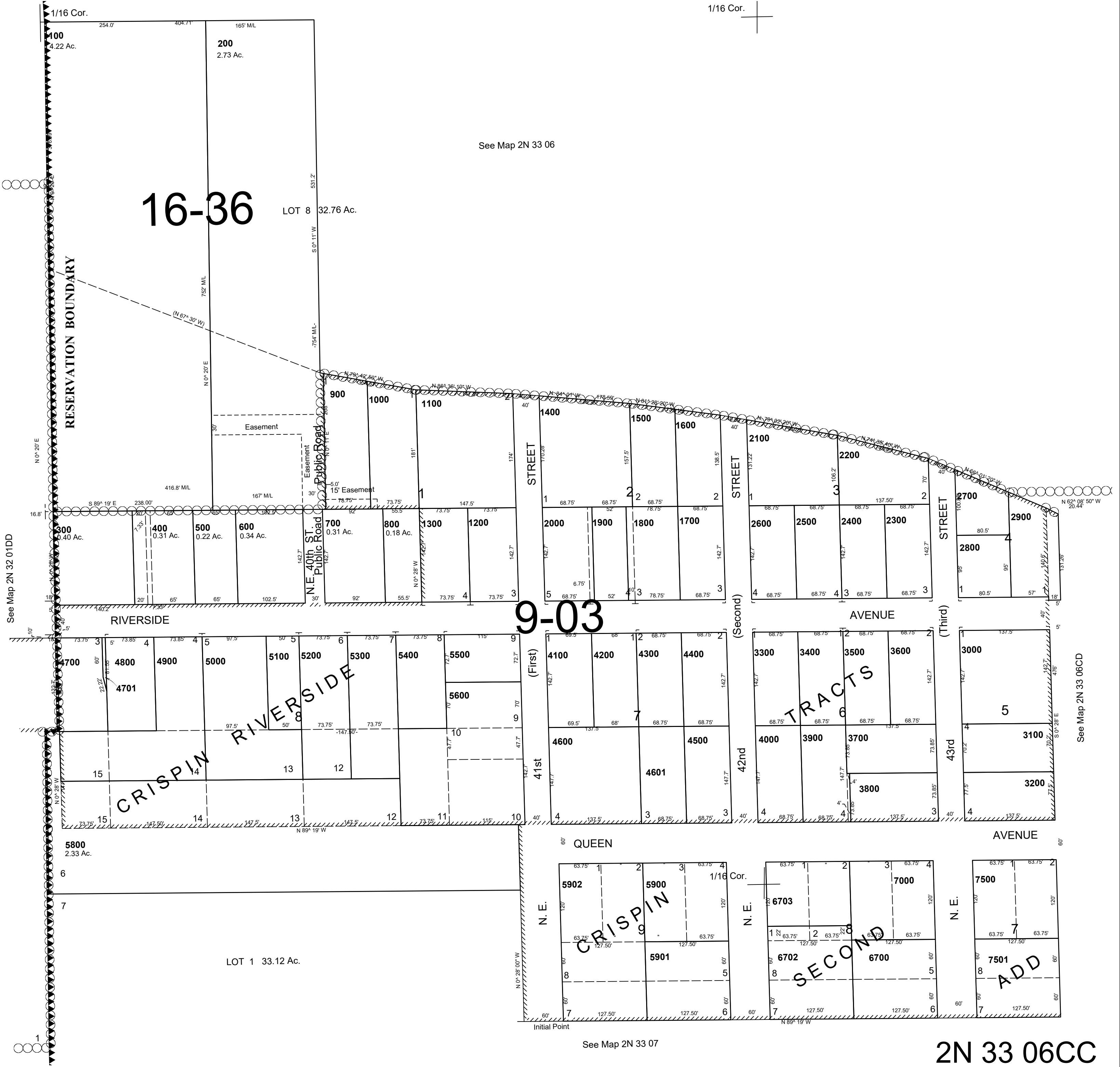


This map was prepared for Assessment & Taxation purposes only and was NOT prepared nor is it suitable for legal, engineering or surveying purposes.

SW 1/4 SW 1/4 SEC 6 T2N R33E WM UMATILLA COUNTY SCALE 1"=100'

12/02/20

2N 33 06CC AERIAL PHOTO NO. 4P-101 RESERVATION



See Map 2N 33 06

See Map 2N 32 01DD

See Map 2N 33 06CC

See Map 2N 33 07

2N 33 06CC

CRISPIN RIVERSIDE

TRACTS

CRISPIN

SECOND

ADD