

This map was prepared for Assessment and Taxation purposes only and has NOT been prepared for legal, engineering or surveying purposes.

SEC 6 T2N R33E WM UMATILLA COUNTY

11/25/05

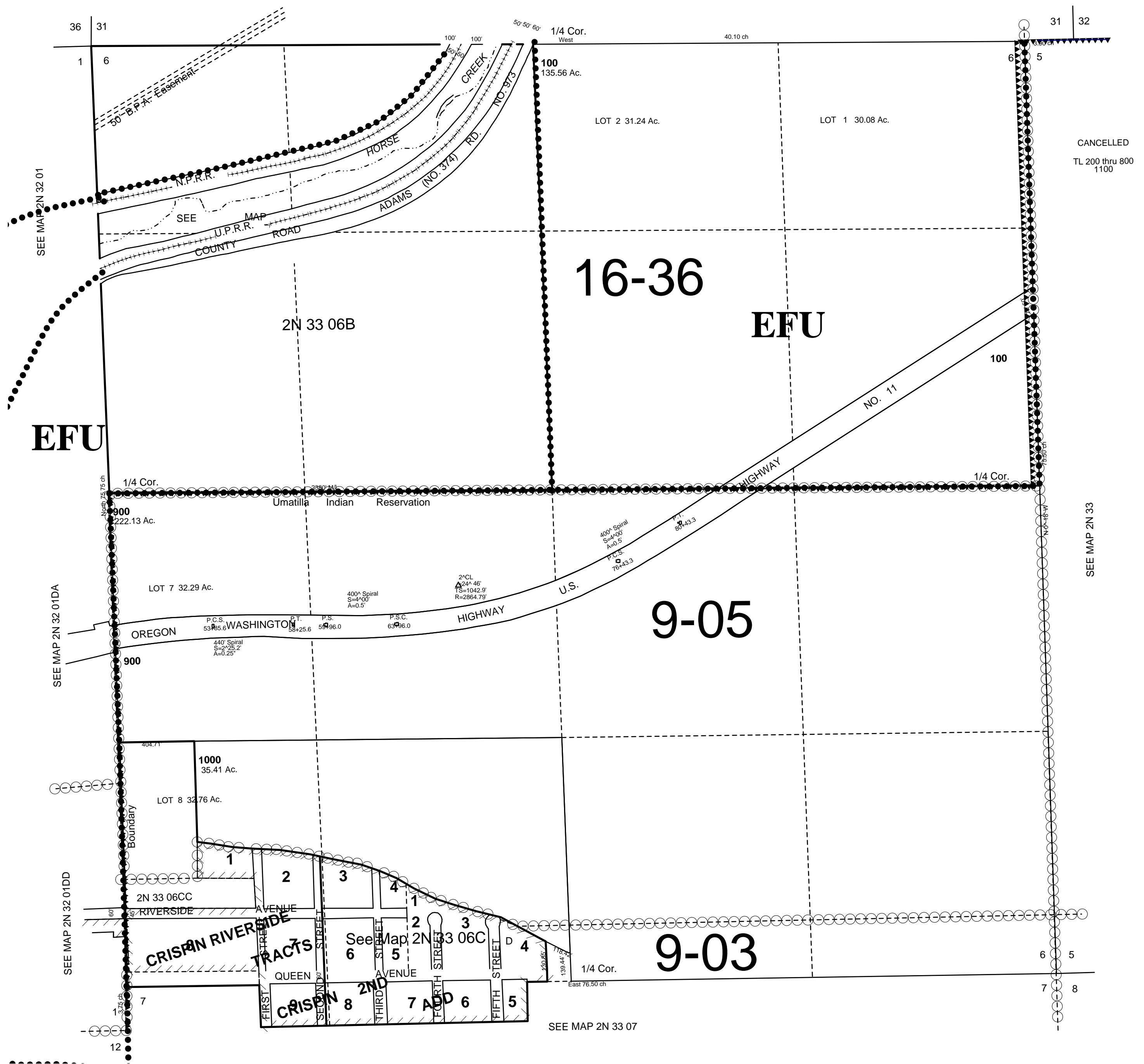
2N3306

AERIAL PHOTO 4P-101

All in AH-P

SCALE 1"=400'

SEE MAP 3N 33



2N3306