

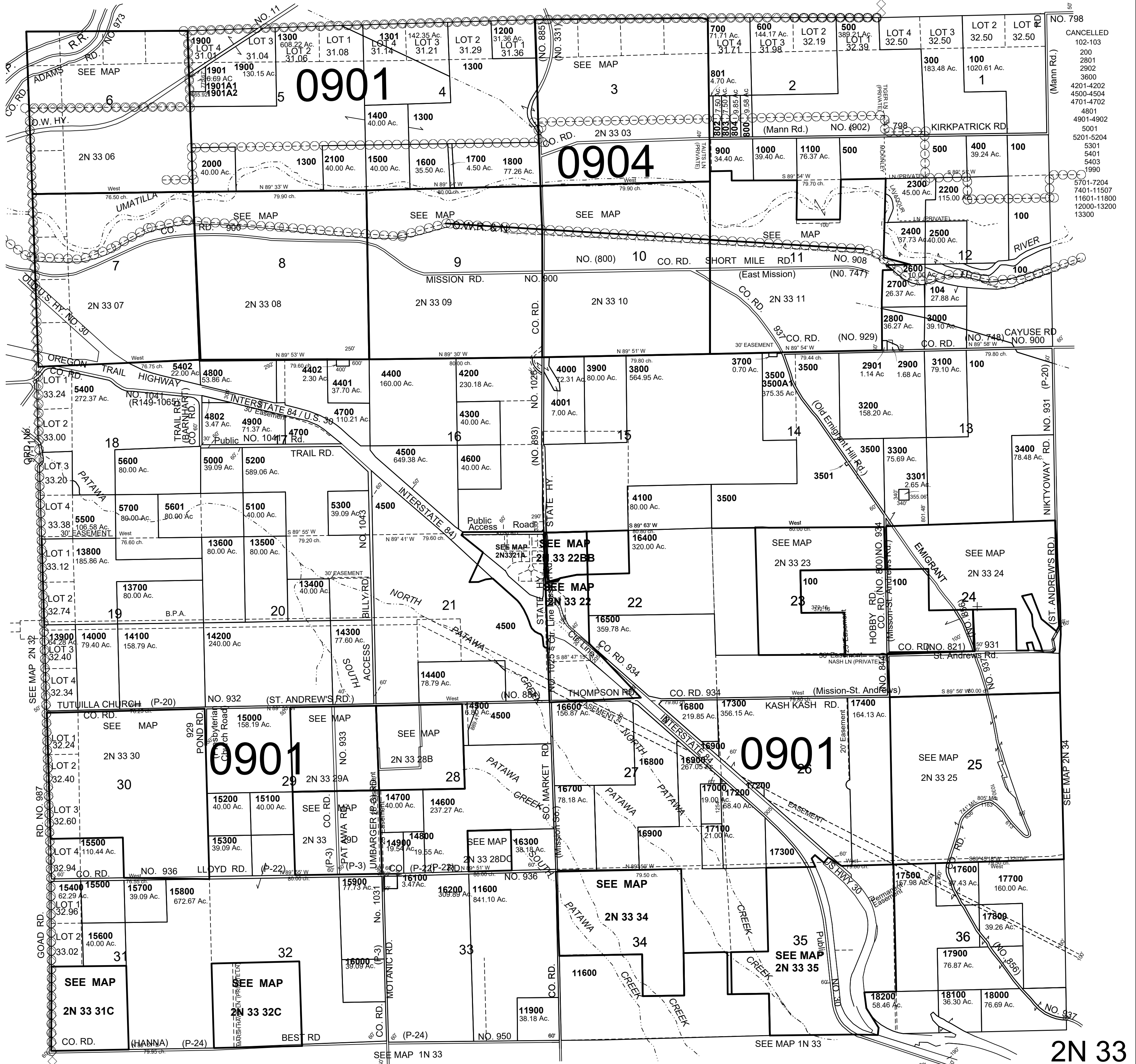
This map was prepared for Assessment & Taxation purposes only and was NOT prepared nor is it suitable for legal, engineering or surveying purposes.

# T2N R33E WM UMATILLA COUNTY SCALE 1"=2000'

Revised: 03/05/21

## 2N 33

AERIAL PHOTO NO. NZ 4P 43-47, 62-66 & 97-100  
RESERVATION



## 2N 33