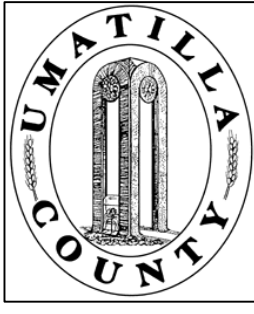


This map was prepared for Assessment purposes only.



SE1/4 SE1/4 SEC 28 T 2N R 32E WM UMATILLA COUNTY, OR

2/09/04

2N 32 28DD

AERIAL PHOTO NO. 4P-59

See FIRM for areas subject to flooding

SCALE: 1" =100'

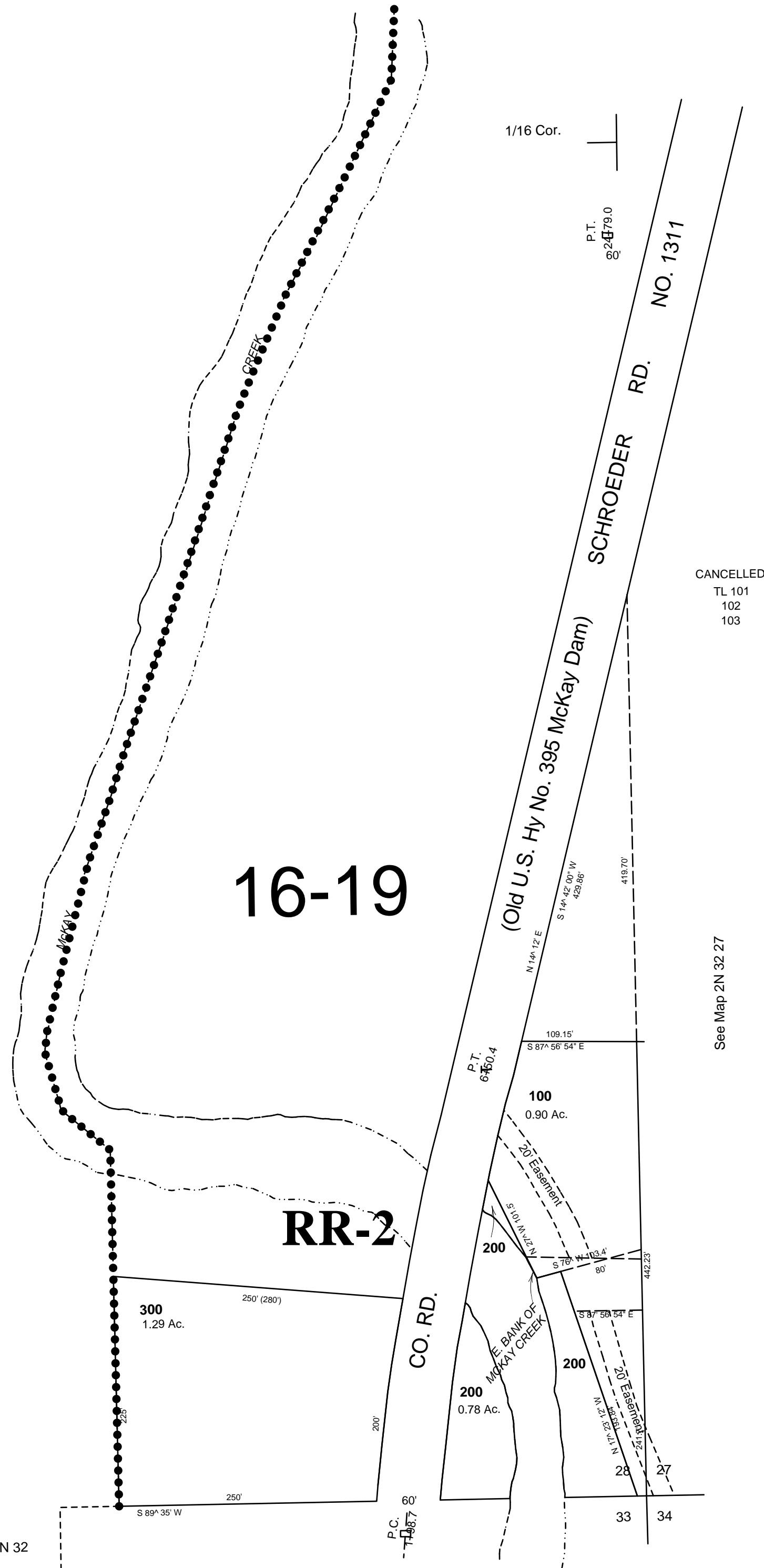
See Map 2N 32 28

1/16 Cor.

See Map 2N 32 28

1/4 Cor.

See Map 2N 32



CANCELLED
TL 101
102
103

See Map 2N 32 27

2N3228DD