

This map was prepared for assessment purposes

NW 1/4 SW 1/4 SEC 27 T2N R32E WM

9/12/06

2N 32 27CB

UMATILLA COUNTY

AERIAL PHOTO NO. 4P-59

See FIRM for areas subject to flooding

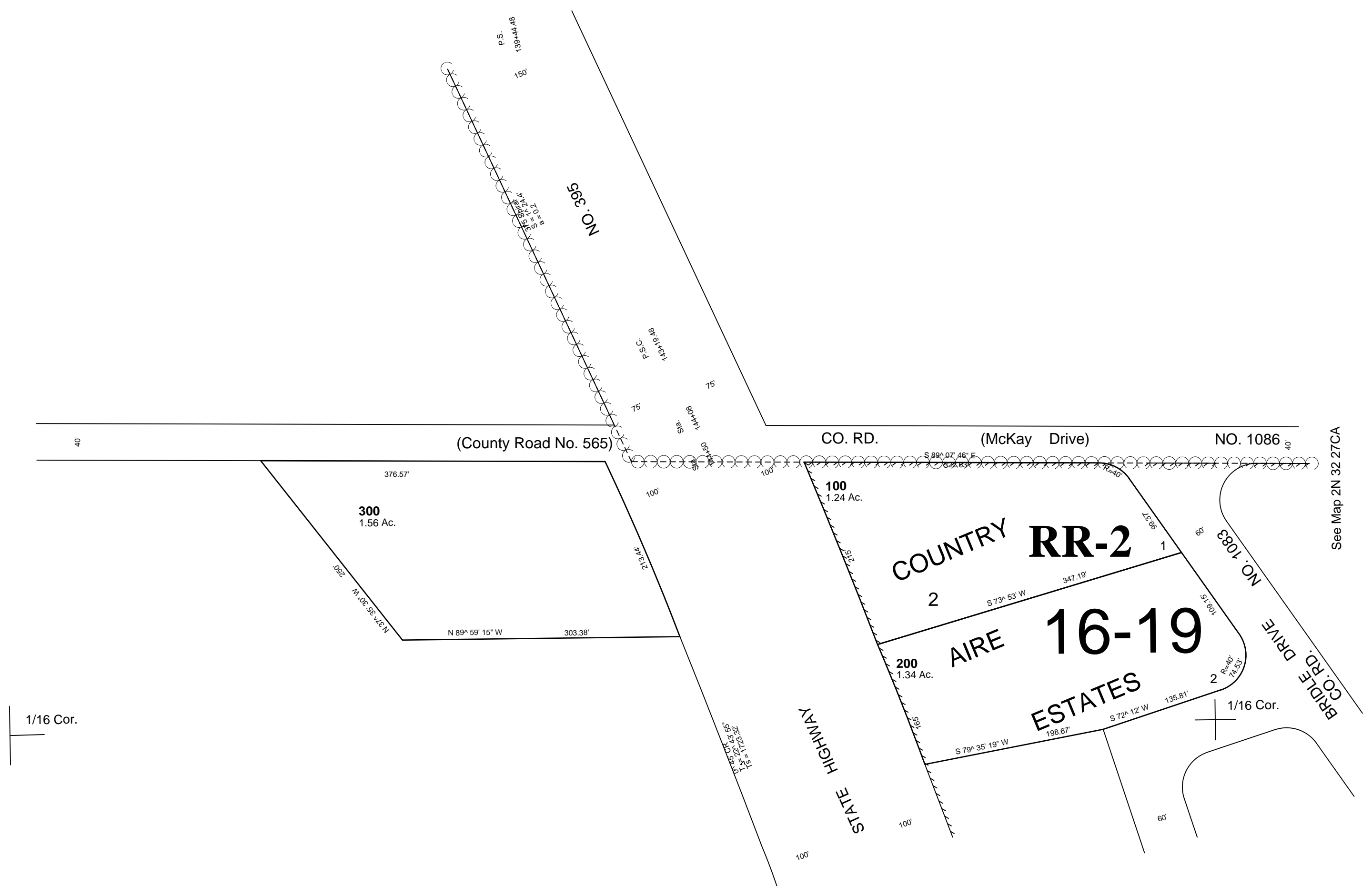
SCALE 1"=100'

1/4 Cor.

1/16 Cor.

See Map 2N 32 27

See Map 2N 32 28



See Map 2N 32 27CA

See Map 2N 32 27

2N 32 27CB