

This map was prepared for assessment purposes

NE1/4 SW1/4 SEC 27 T2N R32E WM
UMATILLA COUNTY
SCALE 1"=100'

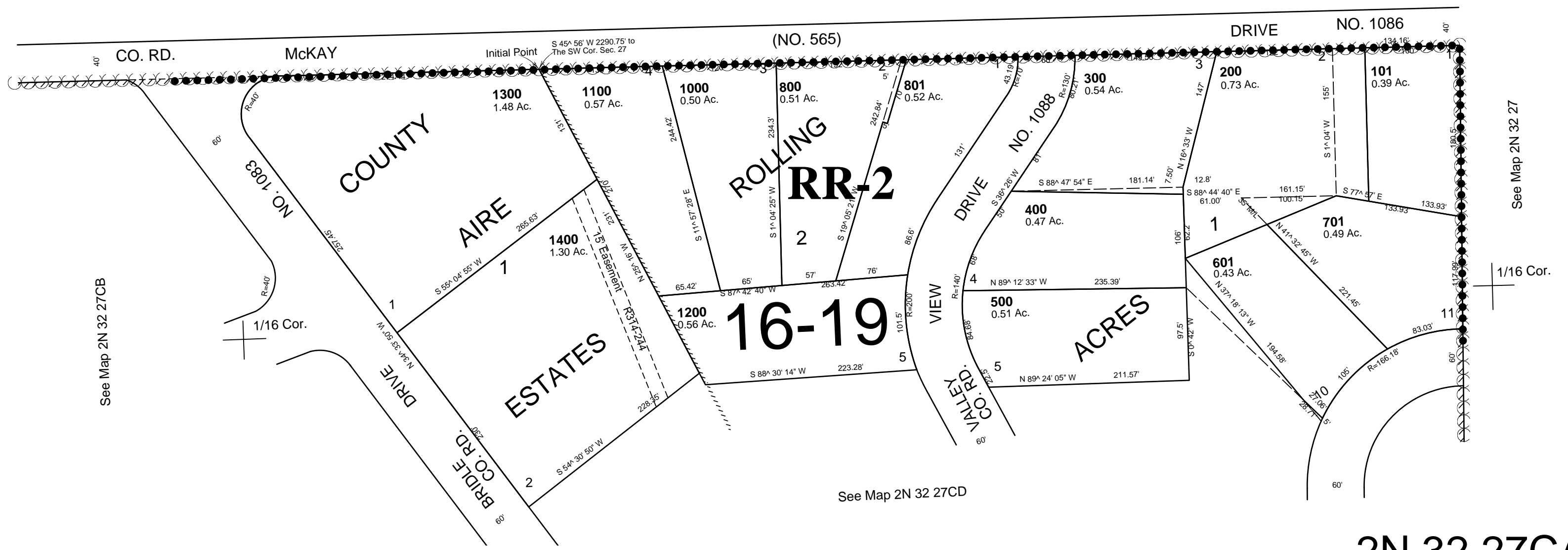
2N 32 27CA
AERIAL PHOTO NO. 4P-59

Center + Sec.

1/16 Cor.

CANCELLED
TL 401
600
700
100
201
900
202

See Map 2N 32 27



2N 32 27CA