

This map was prepared for Assessment & Taxation purposes only and was NOT prepared nor is it suitable for legal, engineering or surveying purposes.

2/22/05

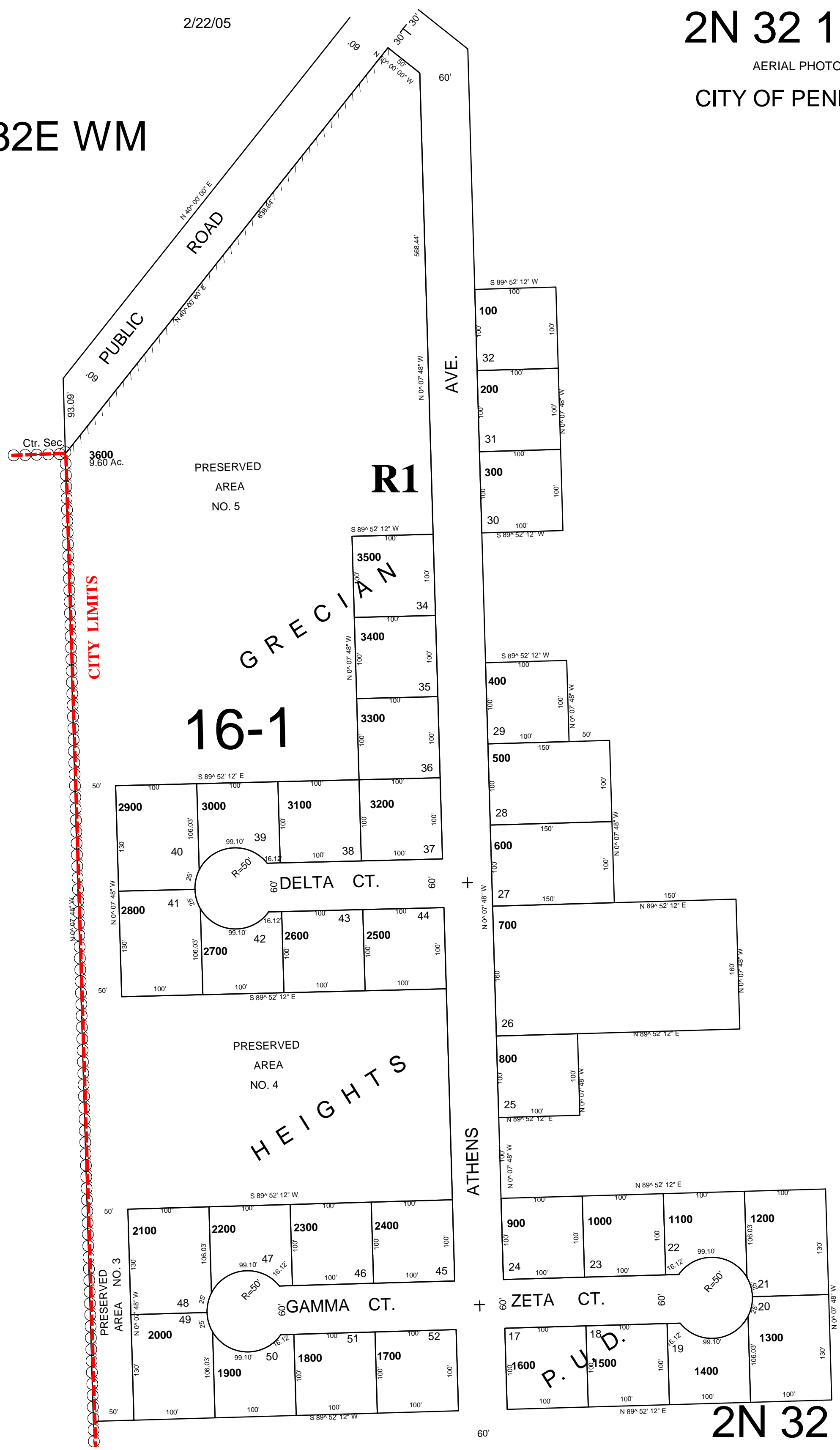
2N 32 15DB

AERIAL PHOTO NO. NZ 4P-59

CITY OF PENDLETON

NW1/4 SE1/4 SEC 15 T2N R32E WM UMATILLA COUNTY

1"=100'



2N 32 15DB