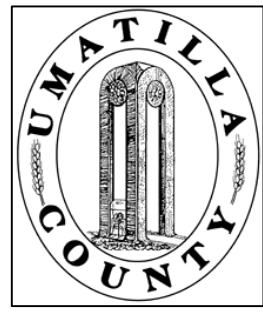


This map was prepared for Assessment & Taxation purposes only and was NOT prepared nor is it suitable for legal, engineering or surveying purposes.



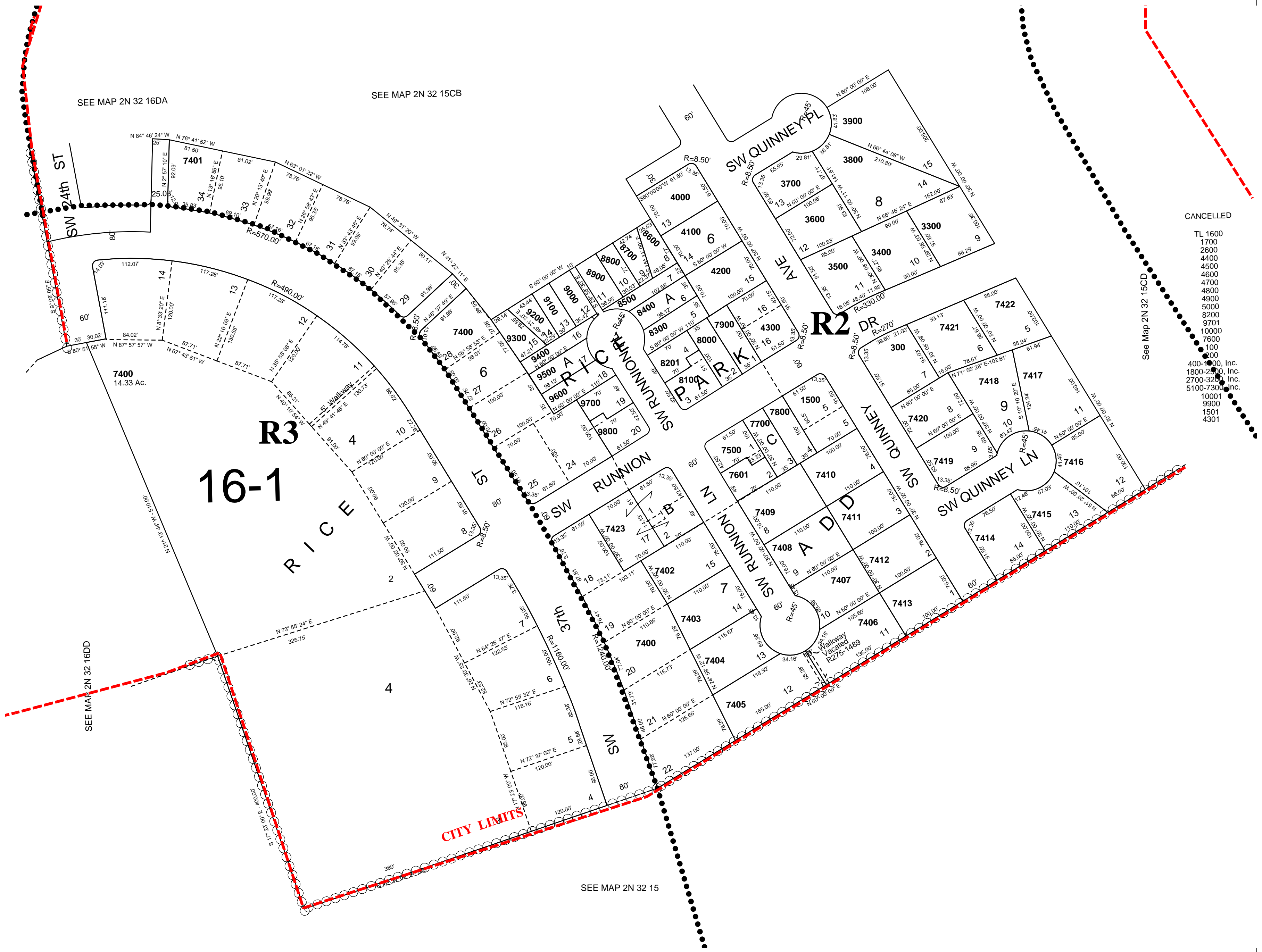
SW1/4 SW1/4 SEC 15 T 2N R 32E WM UMATILLA COUNTY

2N 32 15CC

AERIAL PHOTO NO. 4P-59

SCALE: 1" = 100'

CITY OF PENDLETON



CANCELLED

- TL 1600
- 1700
- 2600
- 4400
- 4500
- 4600
- 4700
- 4800
- 4900
- 5000
- 8200
- 3701
- 10000
- 7600
- 100
- 800
- 400-1000, Inc.
- 1800-2500, Inc.
- 2700-3300, Inc.
- 5100-7300, Inc.
- 10001
- 9900
- 1501
- 4301

REVISED: 7/06/11

2N 32 15CC