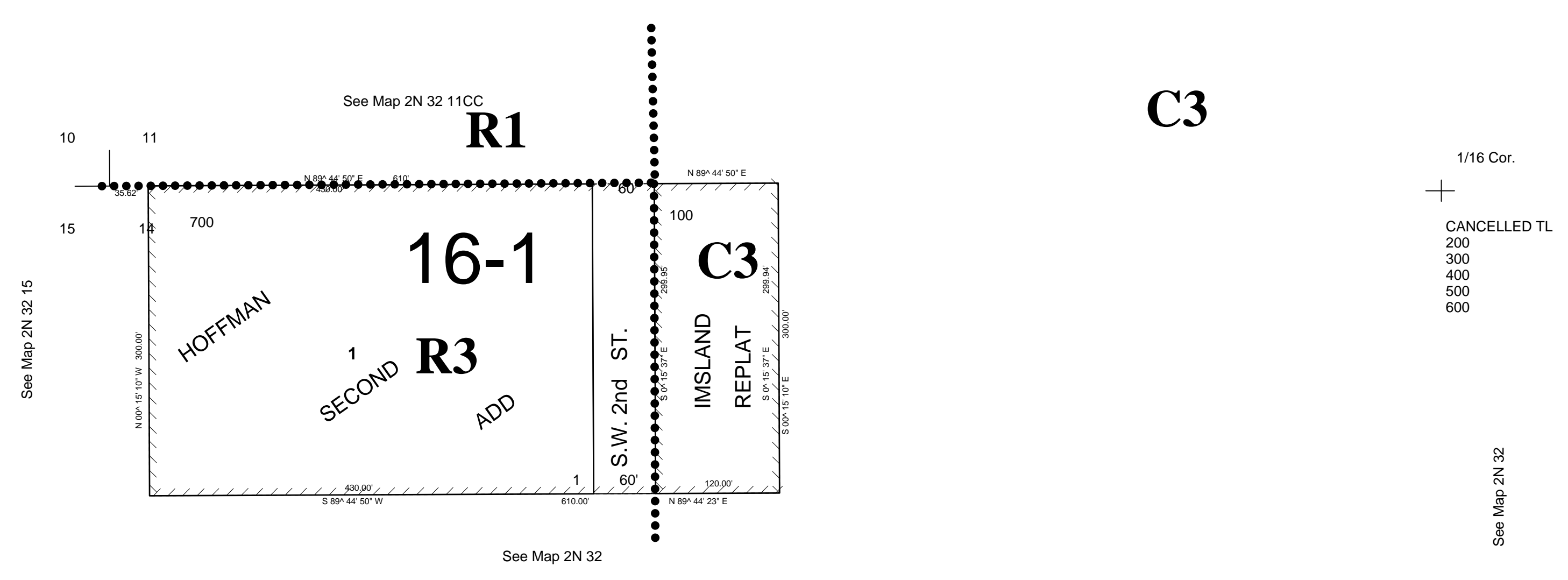


This map was prepared for Assessment & Taxation purposes only and has not been prepared or is it suitable for legal, engineering or surveying purposes.

NW1/4 NW1/4 SEC 14 T2N R32E WM
UMATILLA COUNTY
SCALE 1"=100'

2N3214BB

AERIAL PHOTO 4P-60
CITY OF PENDLETON



C3

2N3214BB