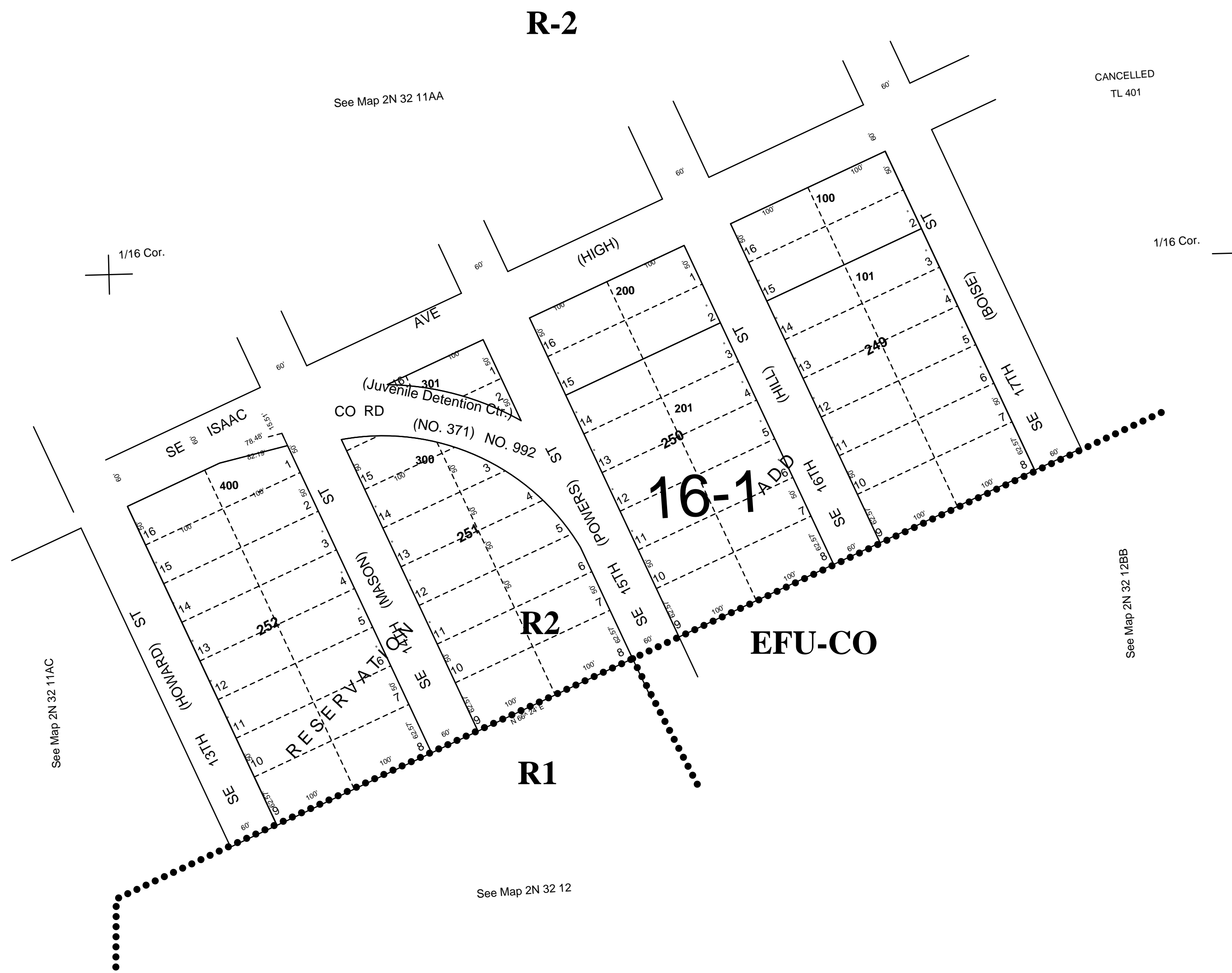


This map was prepared for Assessment & Taxation purposes only and was not prepared nor is it suitable for legal, engineering or surveying purposes.

SE1/4 NE1/4 SEC 11 T2NR32E WM
UMATILLA COUNTY
SCALE 1"=100'

2N3211AD
CITY OF PENDLETON



revised: 12-26-12

2N3211AD