

This map was prepared for Assessment and Taxation purposes only and has NOT been prepared for legal, engineering or surveying purposes.

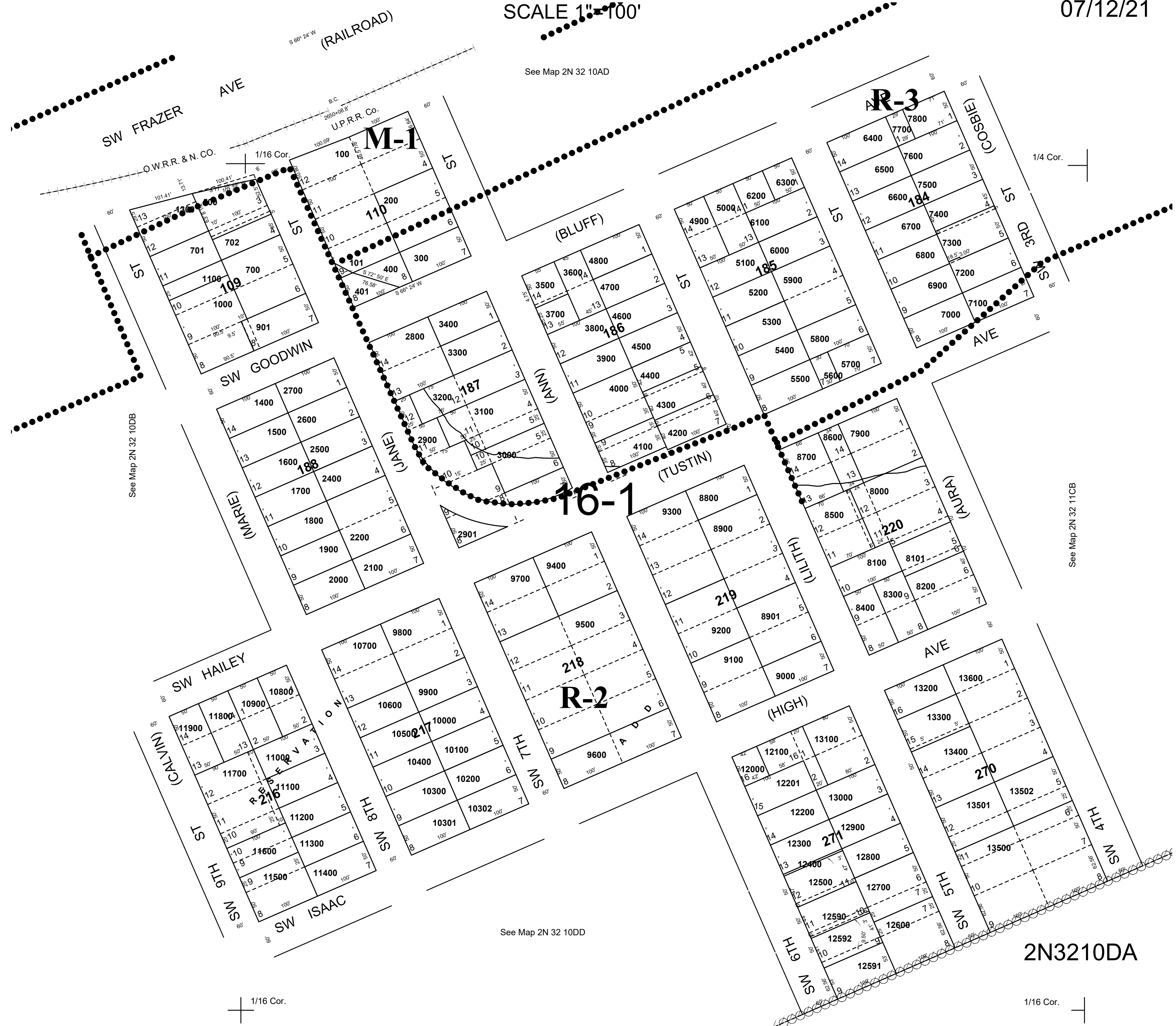
NE 1/4 SE 1/4 SEC 10 T2NR32E WM UMATILLA COUNTY

2N3210DA
CITY OF PENDLETON

07/12/21

SCALE 1" = 100'

See Map 2N 32 10AD



See Map 2N 32 10DB

See Map 2N 32 11CB

See Map 2N 32 10DD

1/16 Cor.

1/16 Cor.

2N3210DA