

This map was prepared for Assessment & Taxation purposes only and was Not prepared, nor is it suitable for legal, engineering or surveying purposes.

2N3205BB

See Map 3N 32 32

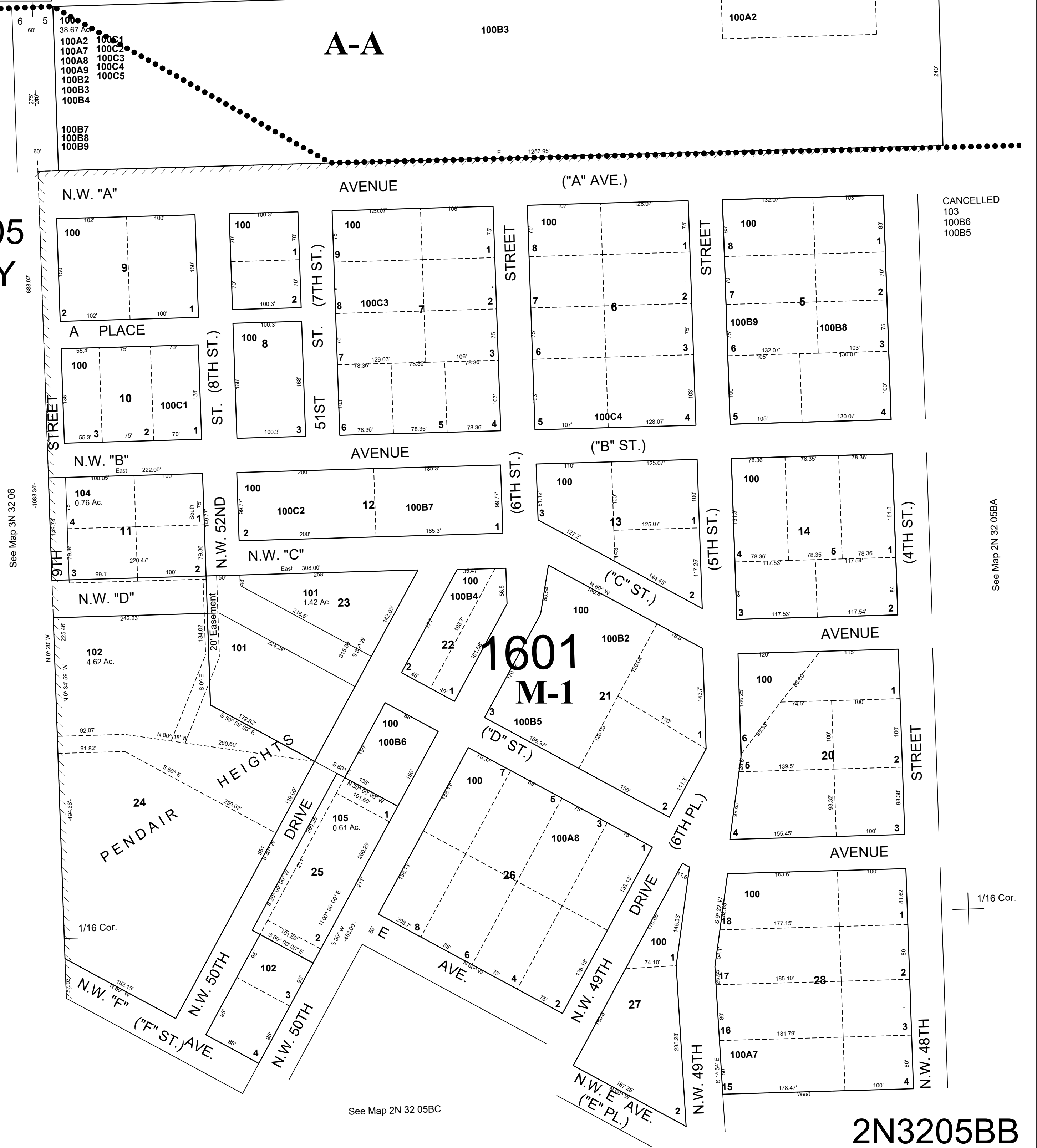
1/16 Cor.

T2 N R32 E WM
NW 1/4 NW 1/4 Sec 05
UMATILLA COUNTY

SCALE 1"=100'

CITY OF PENDLETON

REVISED: 8-3-2020



2N3205BB