

This map was prepared for Assessment & Taxation purposes only and was NOT prepared nor is it suitable for legal, engineering or surveying purposes.

SE1/4 NW1/4 SEC 3 T2N R28E WM UMATILLA COUNTY

9/19/05

2N 32 03BD

AERIAL PHOTO NO. NZ 4P-103

PENDLETON

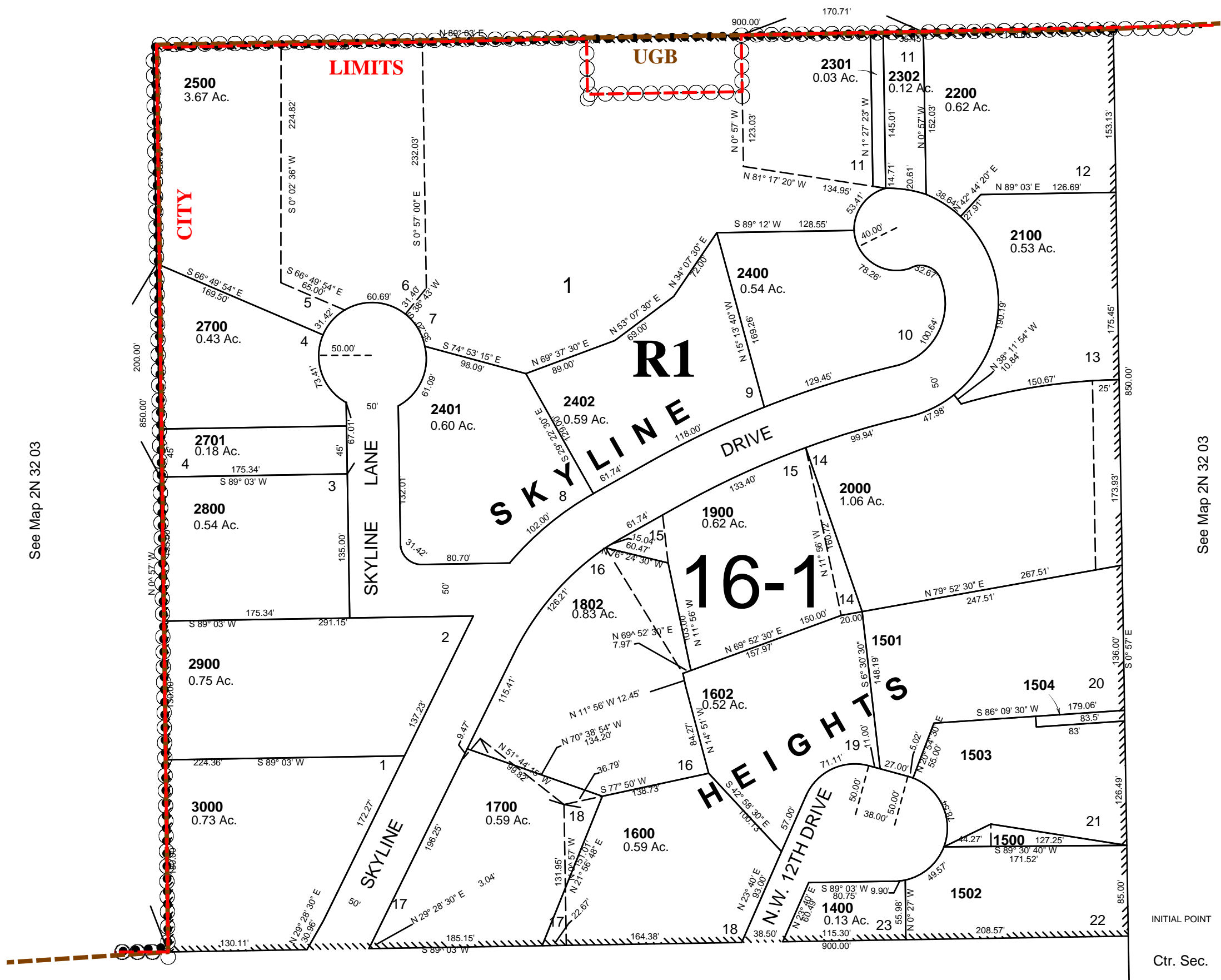
1"=100'

All in AH-P Overlay Zone

- CANCELLED
- TL 100
- 101
- 200
- 300
- 301
- 302
- 400
- 401
- 500
- 500
- 600
- 700
- 800
- 900
- 1000
- 1100
- 1200
- 1300
- 1601
- 1701
- 1702
- 1801
- 2001
- 1800
- 2300
- 2600
- 2601

See Map 2N 32 03

EFU 16-36



See Map 2N 32 03

See Map 2N 32 03

See Map 2N 32 03CA

INITIAL POINT
Ctr. Sec.

2N 32 03BD