

This map was prepared for Assessment and Taxation purposes only and has NOT been prepared for legal, engineering or surveying purposes.

NW1/4 SE1/4 SEC 1 T2N R32E WM UMATILLA COUNTY

SCALE 1"=100'

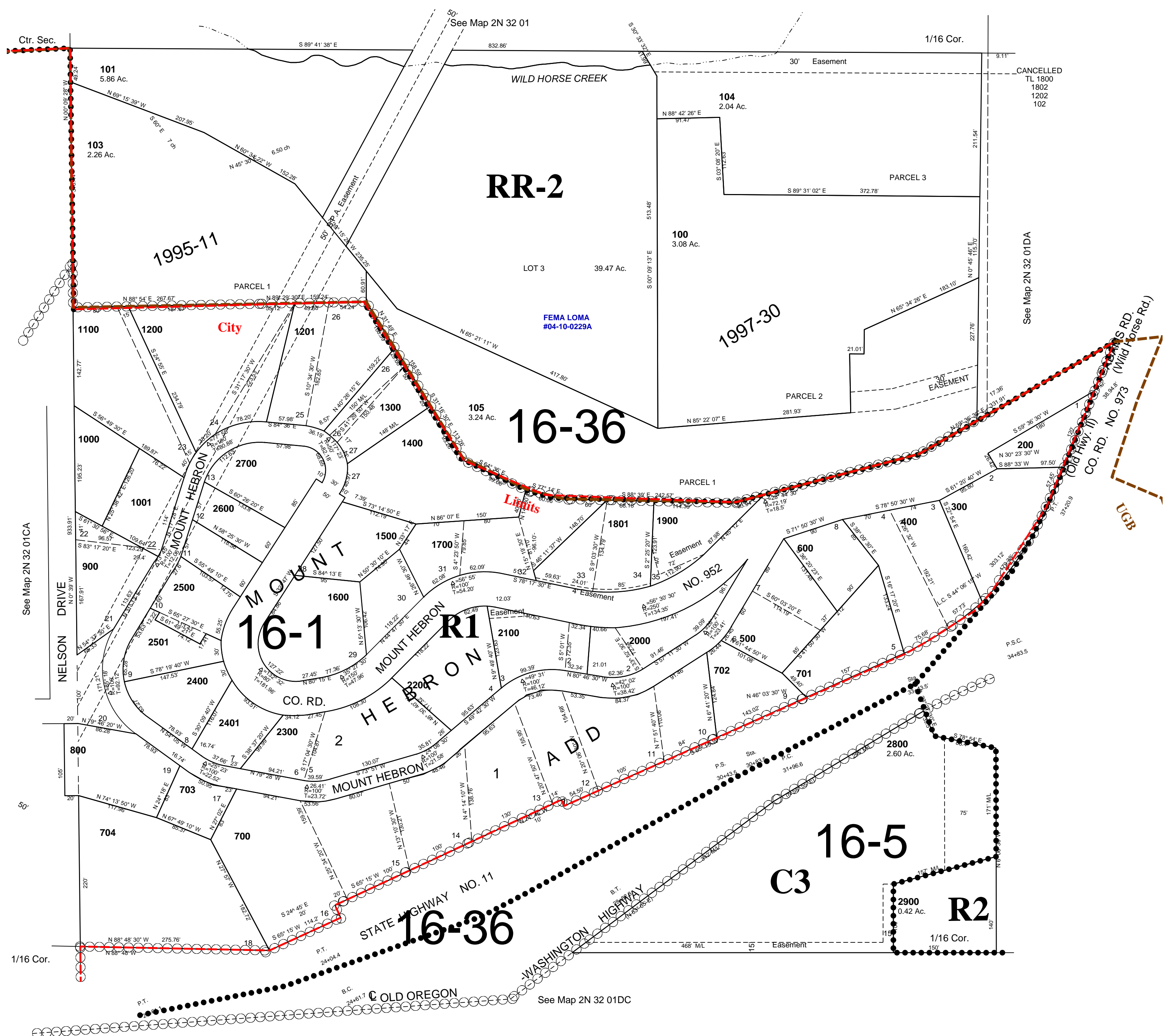
Revised: 9/10/07

2N 32 01DB

AERIAL PHOTO NO. 4P-101

P/O Pendleton City and Urban Growth Area

See FIRM for areas subject to flooding



2N 32 01DB