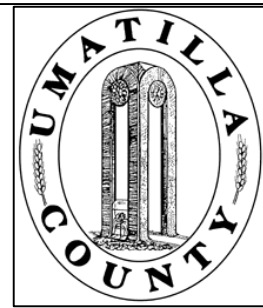


This map was prepared for Assessment & Taxation purposes only and was NOT prepared nor is it suitable for legal, engineering or surveying purposes.



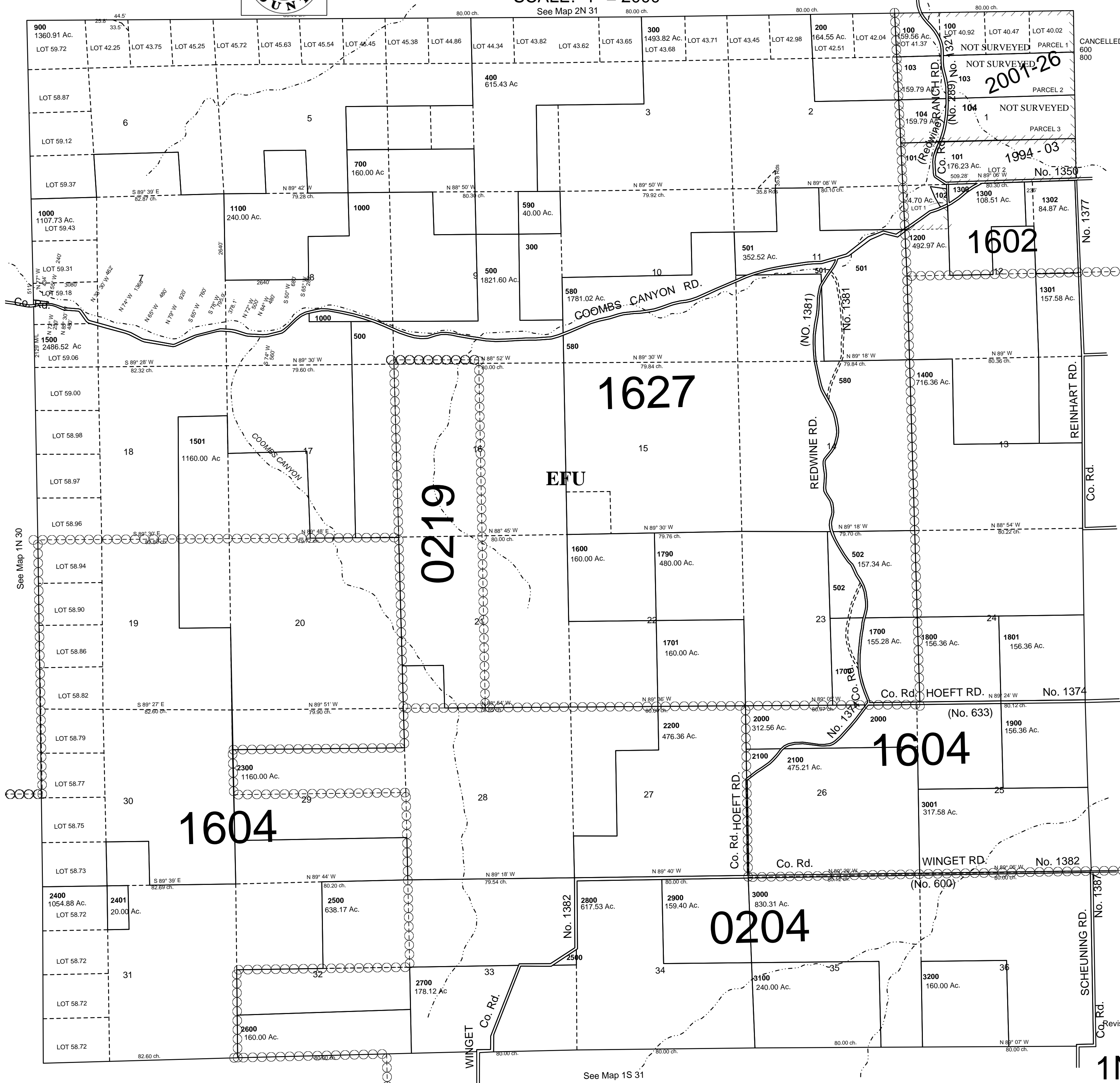
T1N R31E WM UMATILLA COUNTY

1N31

Aerial Photo No NZ-3P-85-89
3P-94-98
3P-128-132

SCALE: 1" = 2000'

See Map 2N 31



See Map 1N 32

1N31

Revised: 08-22-17