

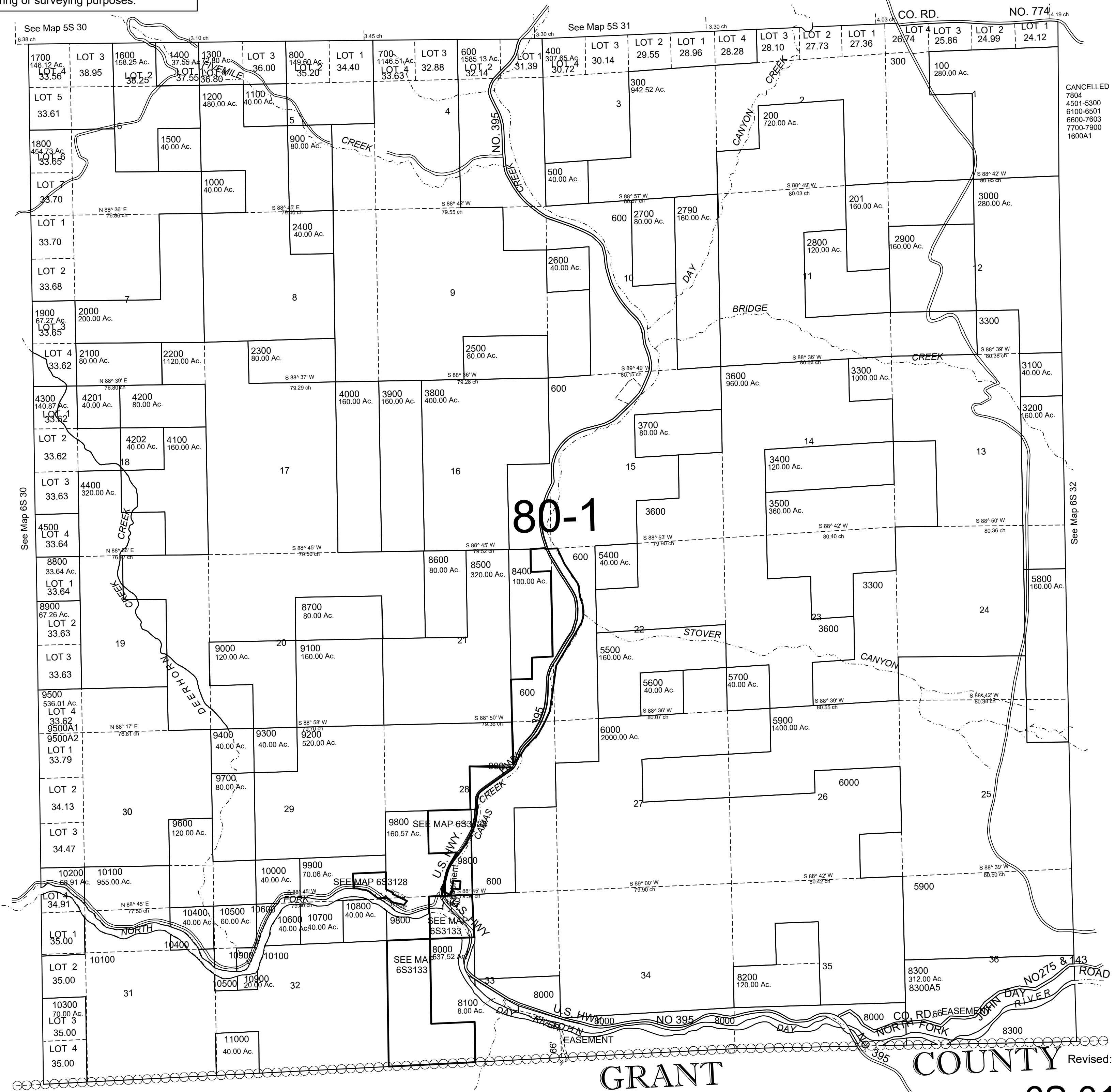
This map was prepared for Assessment & Taxation purposes only and was NOT prepared nor is it suitable for legal, engineering or surveying purposes.

T6S R31E WM UMATILLA COUNTY

1"=2000'

6S 31

AFRIAL PHOTO NO. 9P 5-12 21-28 & 10P 115-123



CANCELLED
7804
4501-5300
6100-6501
6600-7603
7700-7900
1600A1

See Map 5S 30

See Map 5S 31

See Map 6S 30

See Map 6S 32

80-1

GRANT

COUNTY

6S 31

Revised: 07-30-2021