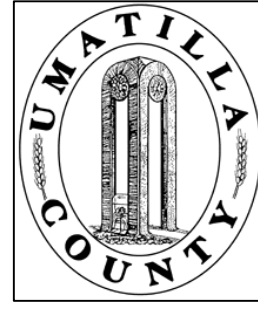


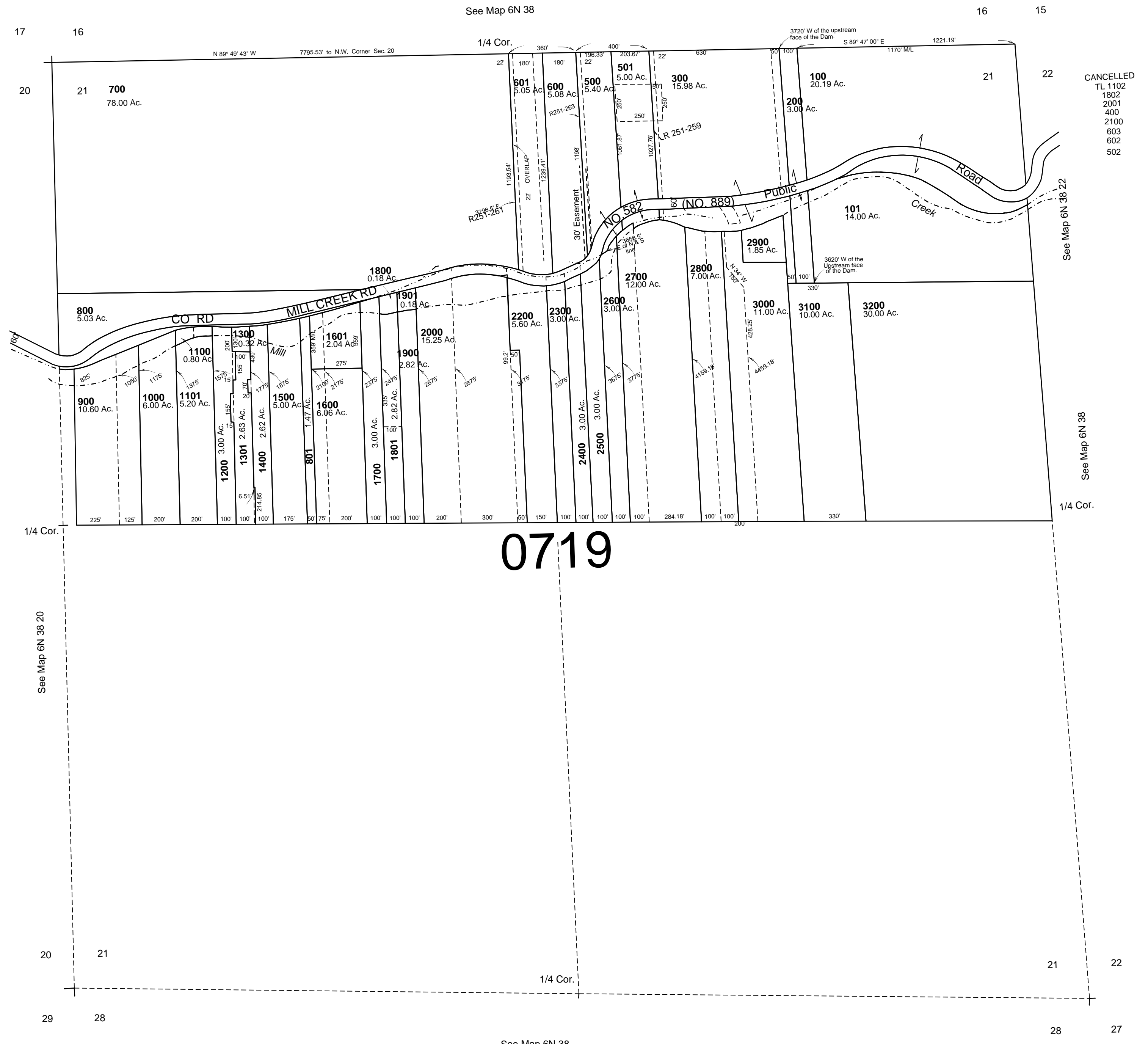
This map was prepared for Assessment & Taxation purposes only and was NOT prepared nor is it suitable for legal, engineering or surveying purposes.



# SEC 21 T6N R38E WM UMATILLA COUNTY

SCALE: 1" = 400'

## 6N 38 21



CANCELLED  
TL 1102  
1802  
2001  
400  
2100  
603  
602  
502

Revised: 06/26/14

## 6N 38 21