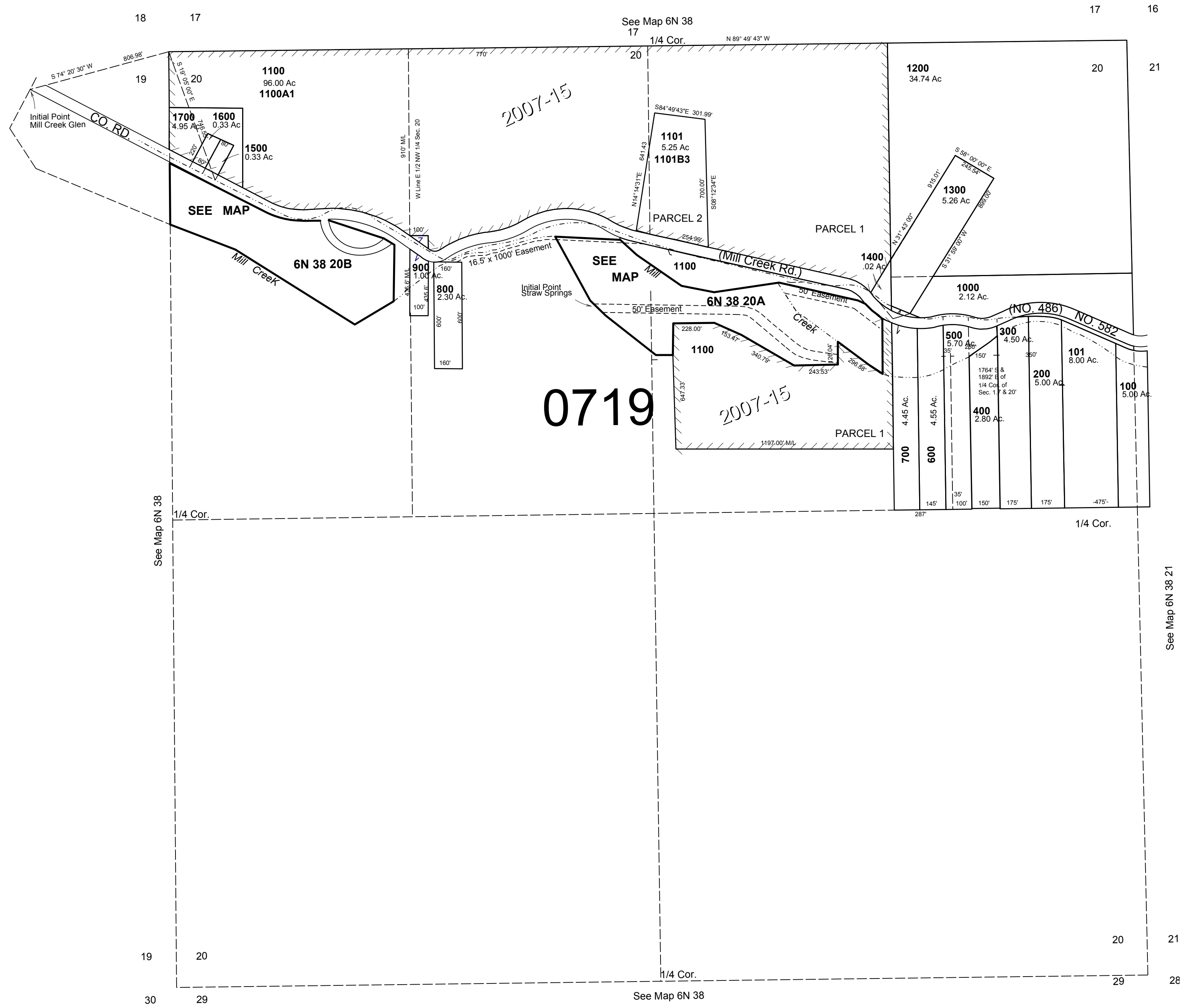


This map was prepared for Assessment & Taxation purposes only and was NOT prepared nor is it suitable for legal, engineering or surveying purposes.

**SEC 20 T5N R38E WM
UMATILLA COUNTY
SCALE 1"=400'**

6N 38 20
AERIAL PHOTO NO. 6P-4



Revised: 03-21-18

6N 38 20