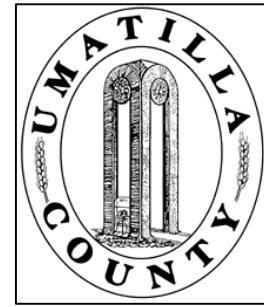


This map was prepared for Assessment & Taxation purposes only and was NOT prepared nor is it suitable for legal, engineering or surveying purposes.



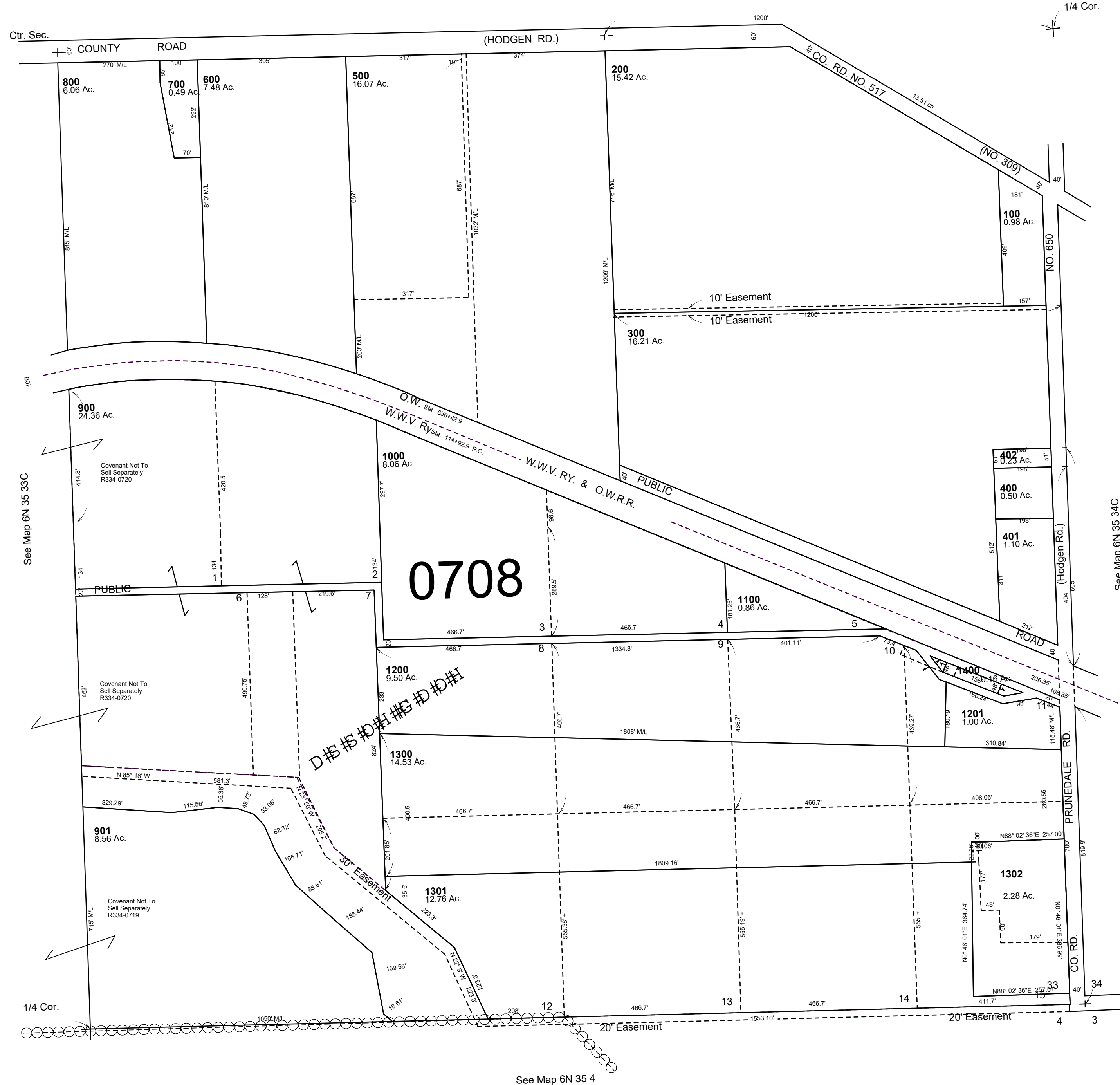
SE1/4 SEC 33 T6N R35E WM UMATILLA COUNTY

6N3533D

SCALE: 1" = 200

AERIAL PHOTO NZ-6P-61

See Map 6N 35 33A



Revised: 09-08-2021

6N3533D