

This map was prepared for Assessment & Taxation purposes only and was NOT prepared nor is it suitable for legal, engineering or surveying purposes.

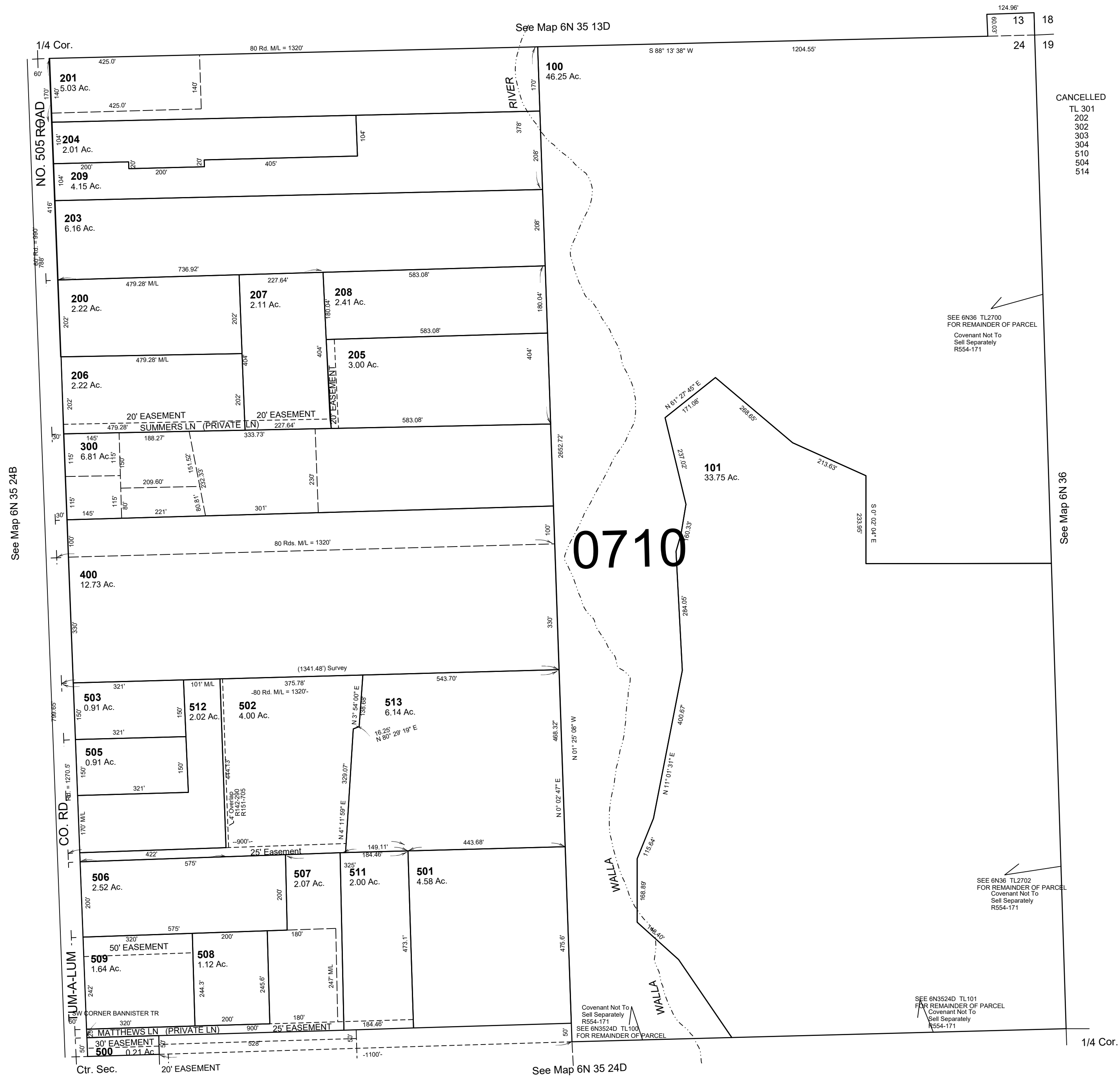
NE 1/4 SEC 24 T6N R35E WM

UMATILLA COUNTY

SCALE 1"=200'

6N 35 24A

AERIAL PHOTO NO. 6P-17



CANCELLED
TL 301
202
302
303
304
510
504
514

SEE 6N36 TL2700
FOR REMAINDER OF PARCEL
Covenant Not To
Sell Separately
R554-171

SEE 6N36 TL2702
FOR REMAINDER OF PARCEL
Covenant Not To
Sell Separately
R554-171

SEE 6N3524D TL101
FOR REMAINDER OF PARCEL
Covenant Not To
Sell Separately
R554-171

Revised: 09-09-2021

6N 35 24A