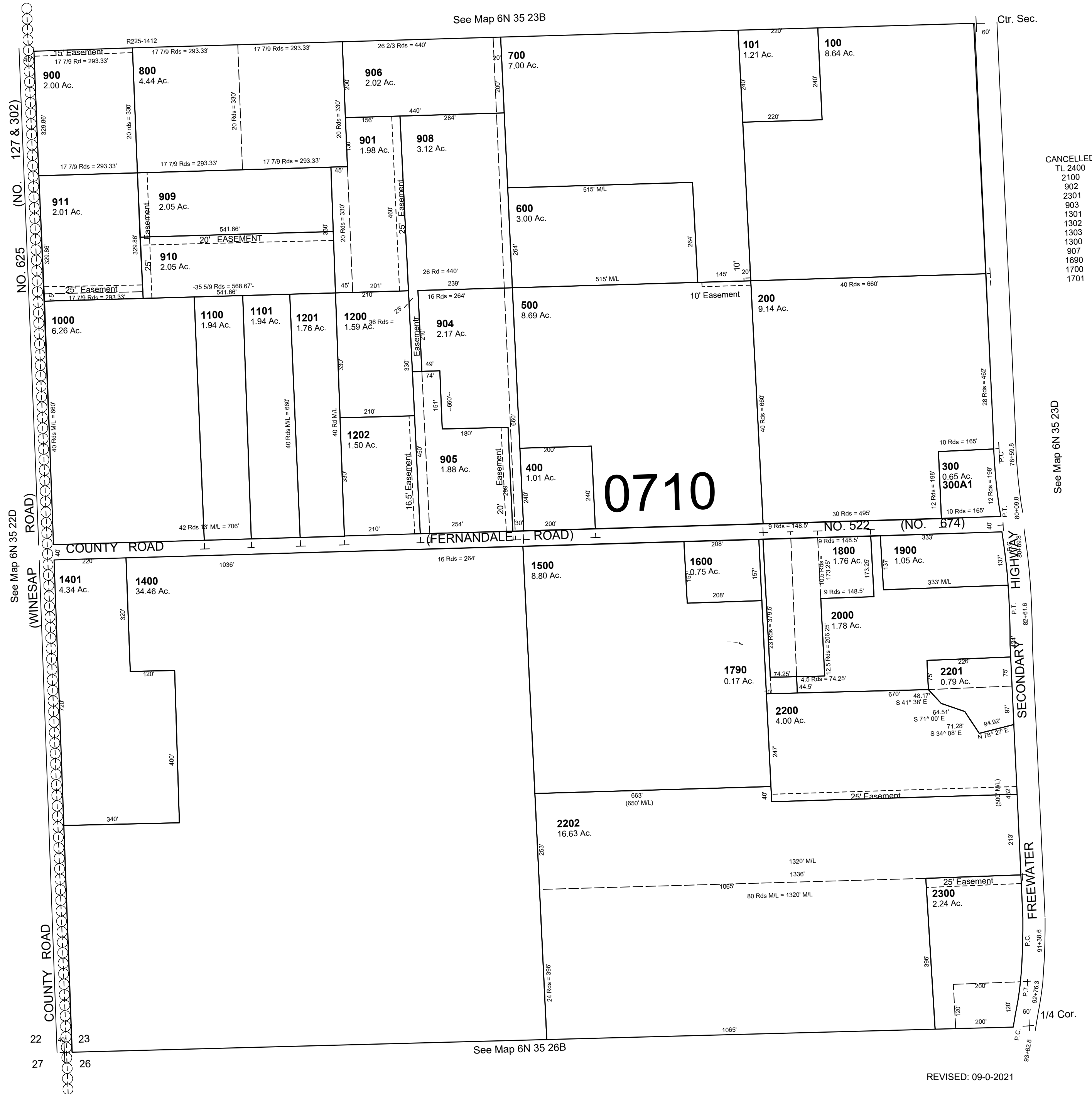


This map was prepared for Assessment & Taxation purposes only and was NOT prepared nor is it suitable for legal, engineering or surveying purposes.

SW 1/4 SEC 23 T6N R35E WM  
 UMATILLA COUNTY  
 SCALE 1"=200'

6N 35 23C  
 AERIAL PHOTO NO. 6P-19



6N 35 23C