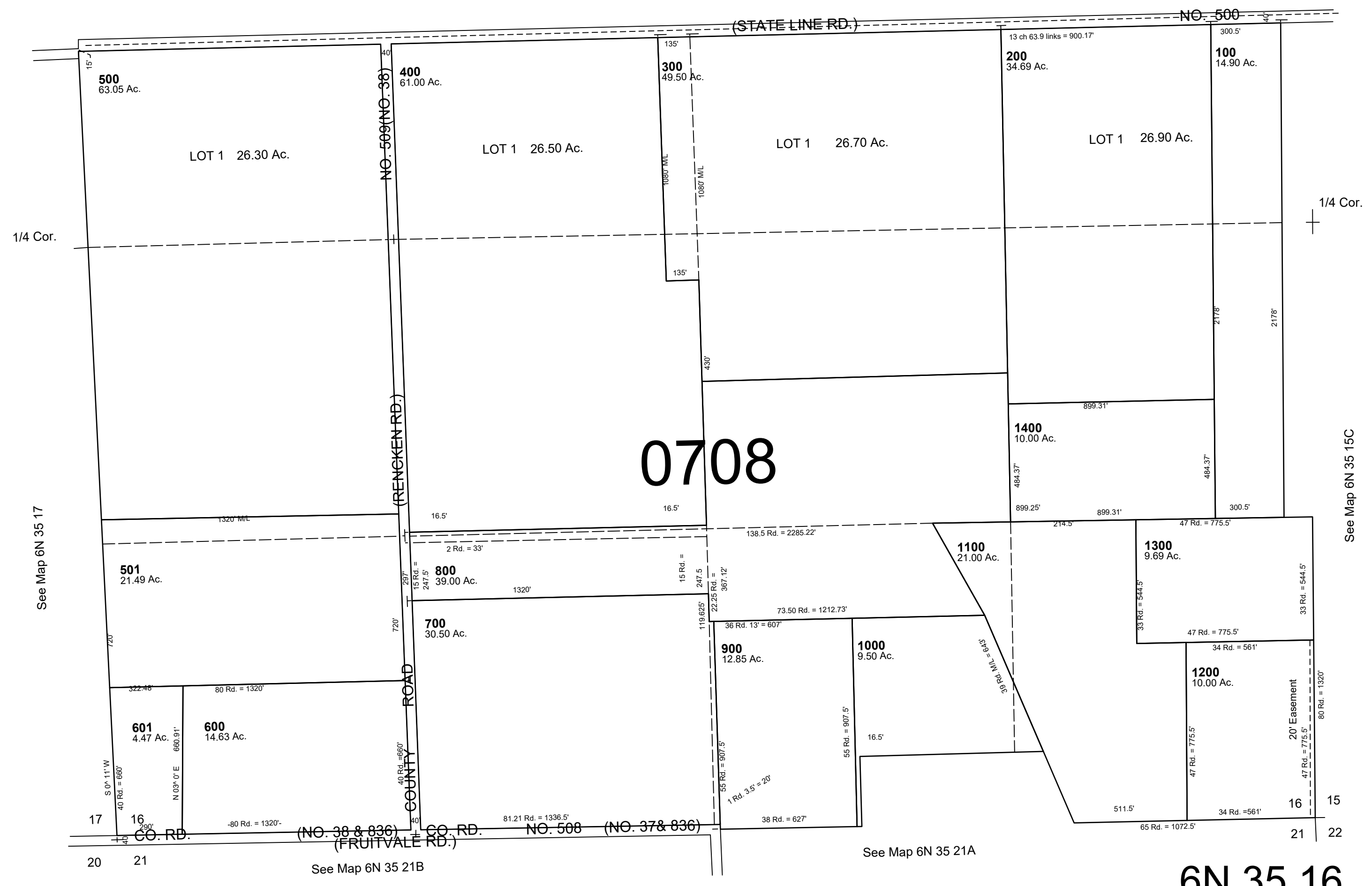


This map was prepared for Assessment & Taxation purposes only and was NOT prepared nor is it suitable for legal, engineering or surveying purposes.

SEC 16 T6N R35E WM
UMATILLA COUNTY
SCALE 1"=400'

6N 35 16
AERIAL PHOTO NO. 6P-20



6N 35 16

REVISED: 09-08-2021