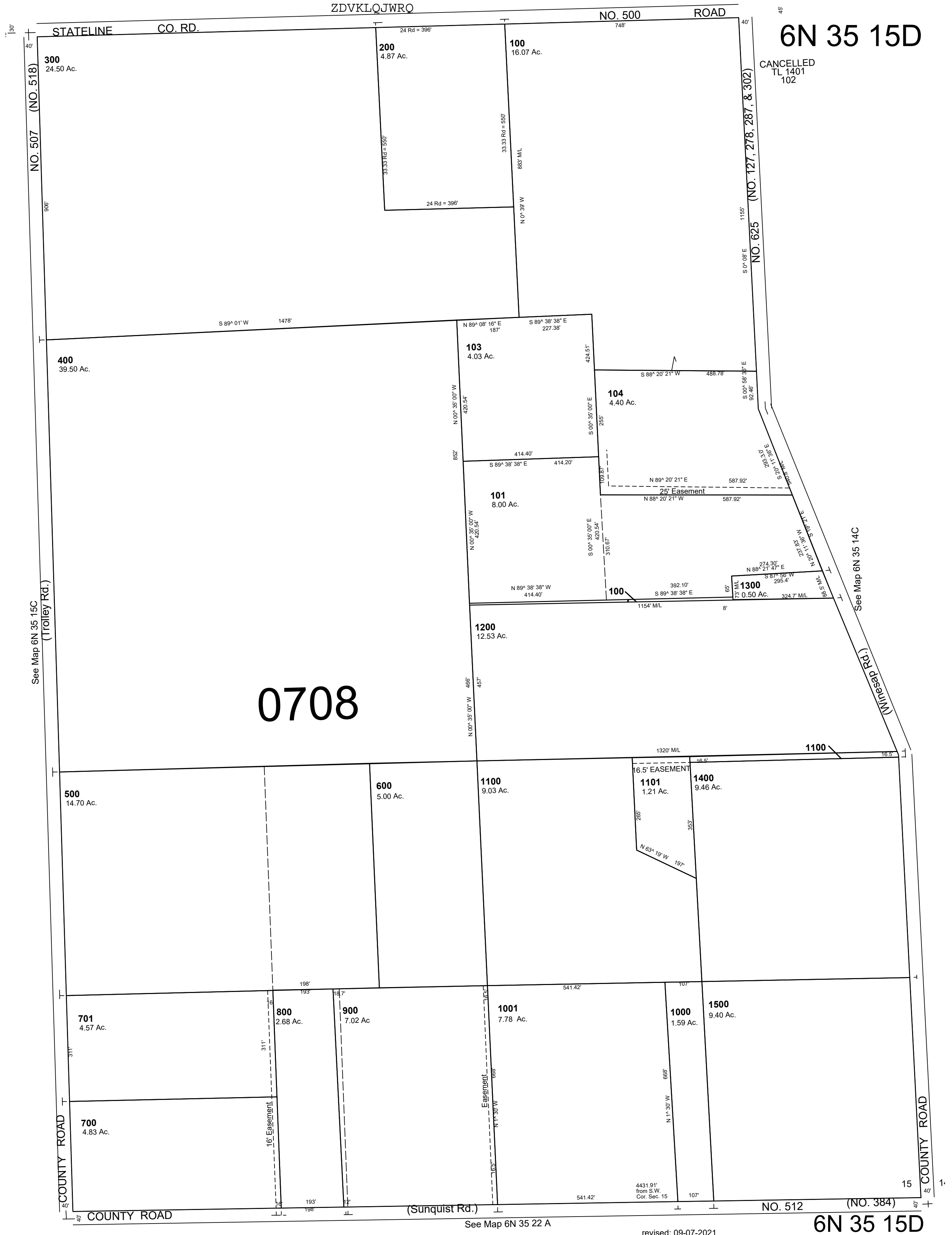


This map was prepared for Assessment & Taxation purposes only and was NOT prepared, nor is it suitable, for legal, engineering or surveying purposes.

### E1/2 SEC 15 T6N R35E WM UMATILLA COUNTY

SCALE: 1" = 200'

AERIAL PHOTO NO: NZ 6P-18



6N 35 15D

CANCELLED  
TL 1401  
102

6N 35 15D