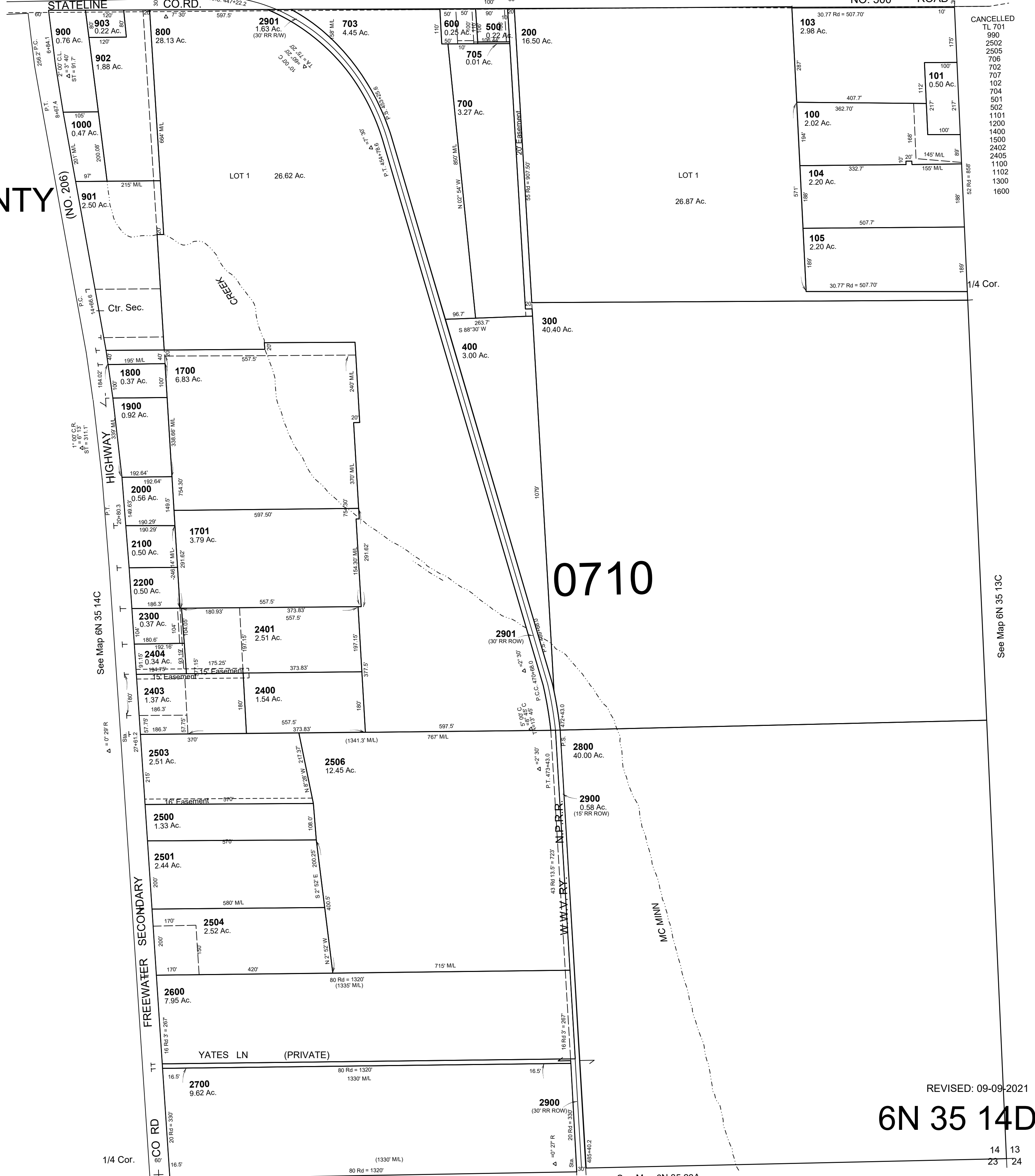


RY. N.P.R.R. **E 1/2 SEC 14 T6N R35E WM** AERIAL PHOTO NO. NZ-6P-18 **6N 35 14D**
 STATELINE CO. RD. WASHINGTON NO. 500 ROAD 3/4 Cor.

This map was prepared for Assessment & Taxation purposes only and was NOT prepared nor is it suitable for legal, engineering or surveying purposes.

SCALE: 1" = 200'

UMATILLA COUNTY



- CANCELLED
- TL 701
 - 990
 - 2502
 - 2505
 - 706
 - 702
 - 707
 - 102
 - 704
 - 501
 - 502
 - 1101
 - 1200
 - 1400
 - 1500
 - 2402
 - 2405
 - 1100
 - 1102
 - 1300
 - 1600

See Map 6N 35 13C

REVISED: 09-09-2021

6N 35 14D

14 13
23 24

See Map 6N 35 23A