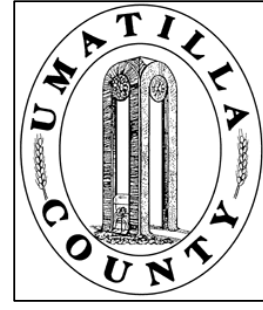


This map was prepared for Assessment & Taxation purposes only and was NOT prepared nor is it suitable for legal, engineering or surveying purposes.



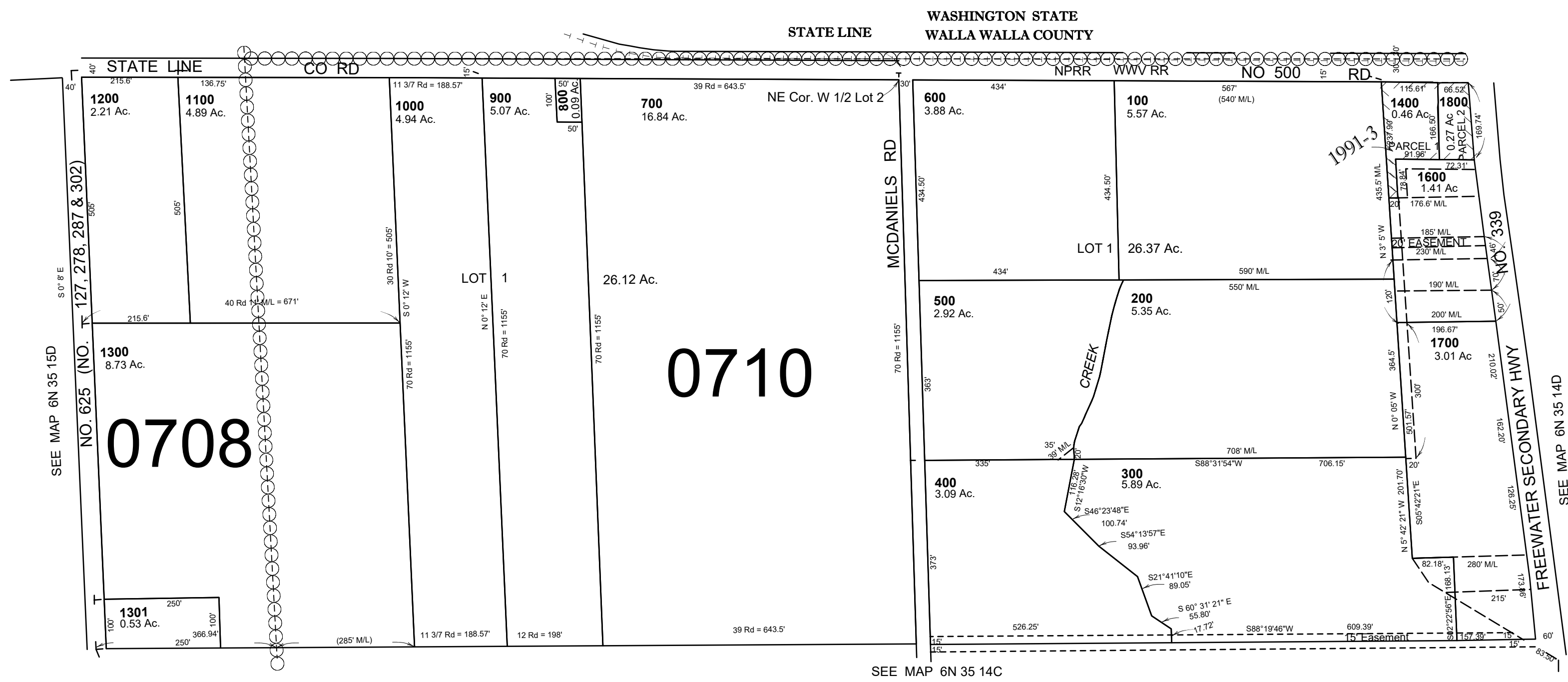
# NW1/4 SEC 14 T6N R35E WM UMATILLA COUNTY

SCALE: 1" = 200

## 6N 35 14B

AERIAL PHOTO NO. NZ-6P-19

CANCELLED NOS  
1500



Revised: 09-08-2021

## 6N 35 14B