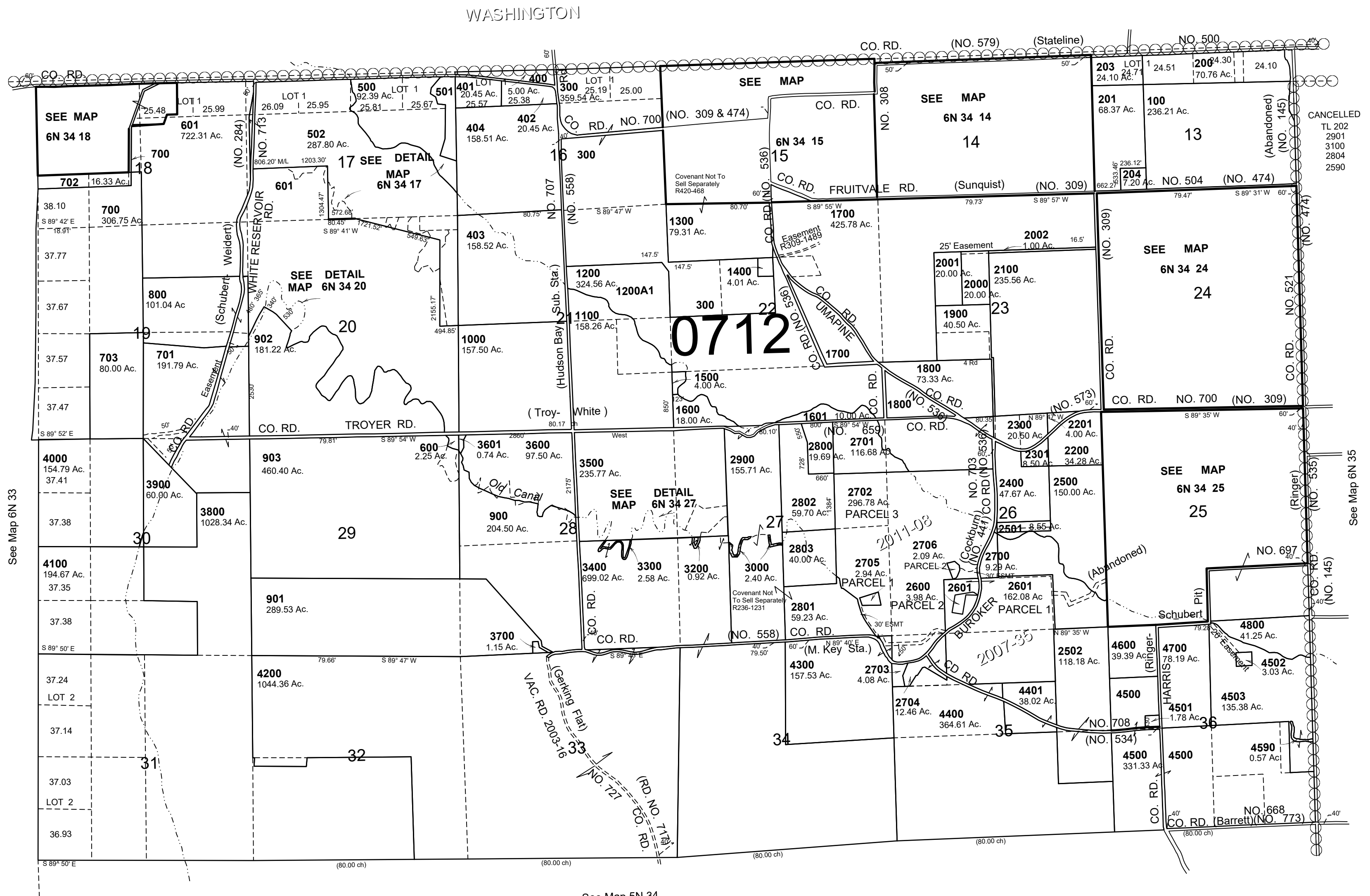


This map was prepared for Assessment & Taxation purposes only and was NOT prepared nor is it suitable for legal, engineering or surveying purposes.

T6N R34E WM UMATILLA COUNTY SCALE 1"=2000'

6N 34
AERIAL PHOTO NO NZ 6P 23-27



See Map 6N 33

See Map 5N 34

See Map 6N 35

Revised: 02-28-20

6N 34