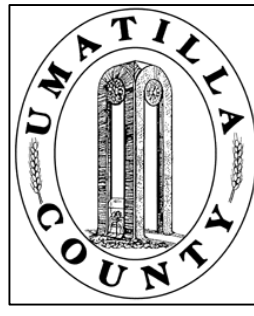


This map was prepared for Assessment & Taxation purposes only and was NOT prepared nor is it suitable for legal, engineering or surveying purposes.

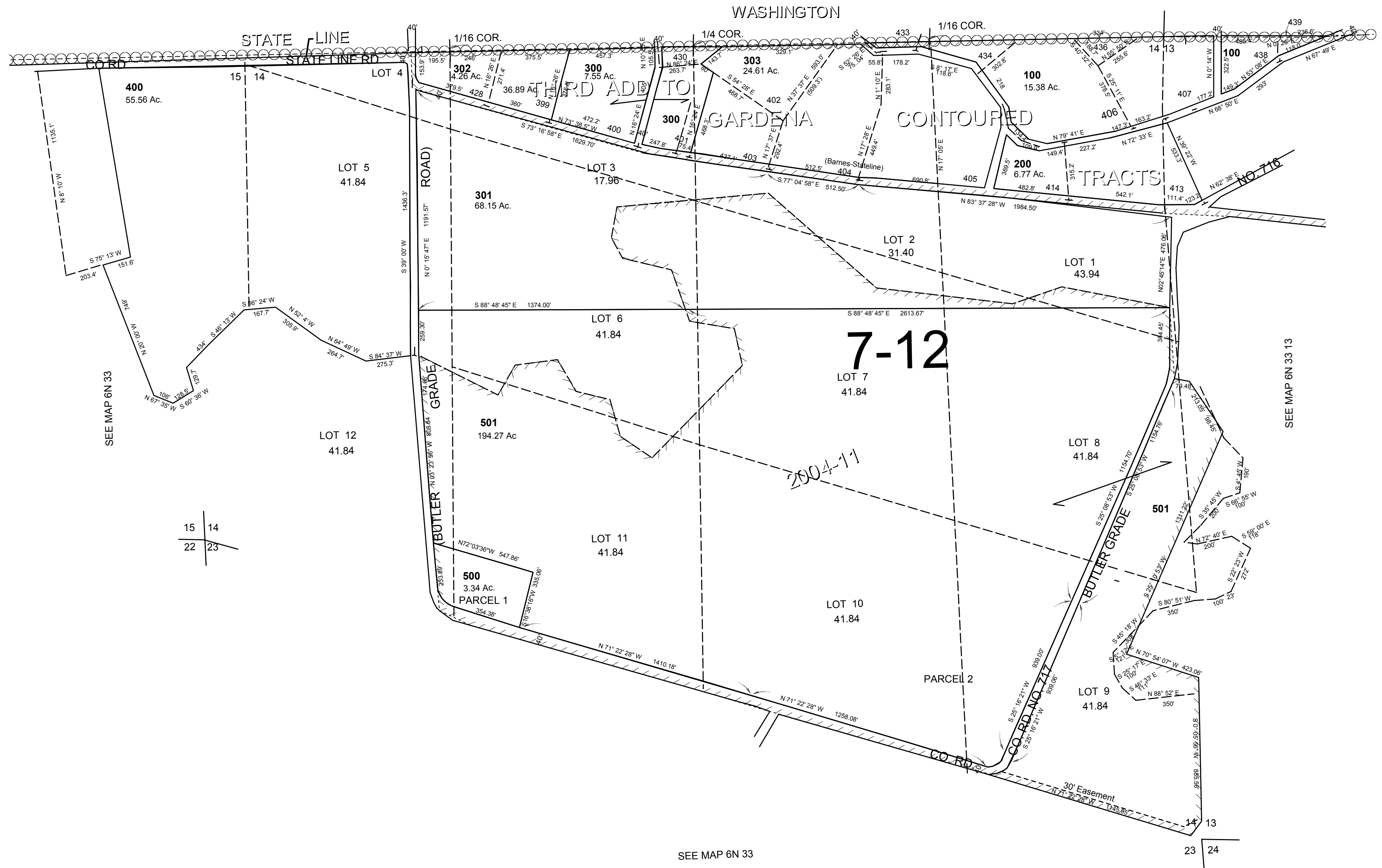


# SEC 14 T 6N R 33E WM UMATILLA COUNTY

6N 33 14

SCALE: 1" = 400'

AERIAL PHOTO NO. 6P-28



SEE MAP 6N 33

15 14  
22 23

SEE MAP 6N 33

SEE MAP 6N 33 13

Revised: 10-30-17

6N 33 14