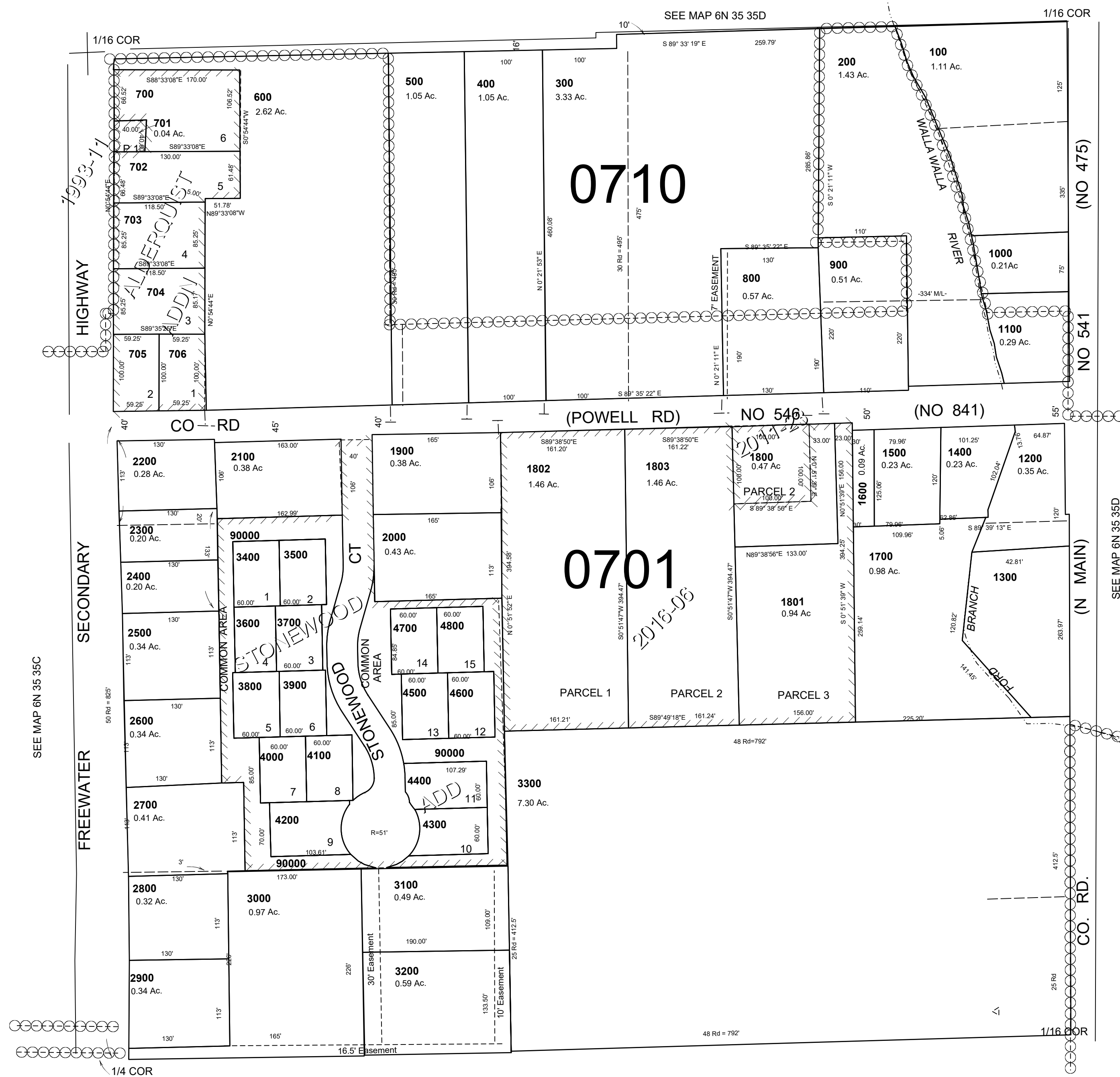


This map was prepared for Assessment & Taxation purposes only and was NOT prepared nor is it suitable for legal, engineering or surveying purposes.

SW 1/4 SE 1/4 SEC 35 T6N R35E WM
UMATILLA COUNTY
SCALE 1"=100'

6N 35 35DC
AERIAL PHOTO NO. 6P-53



SEE MAP 5N 35 02

Revised: 11-27-18

6N 35 35DC