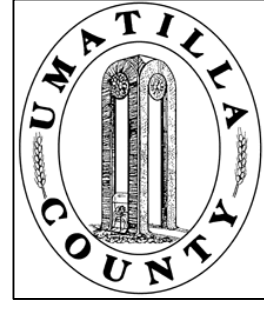


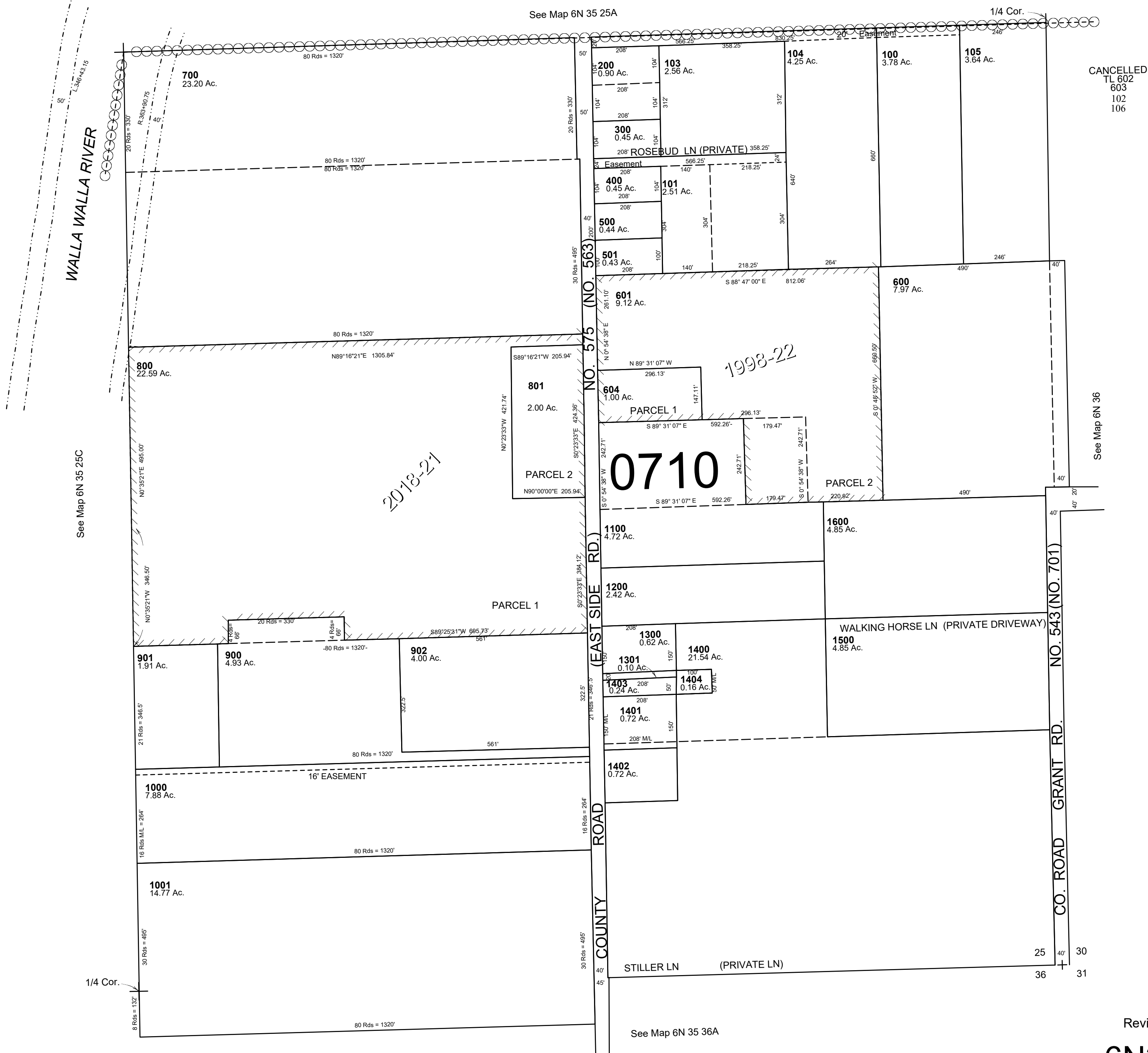
This map was prepared for Assessment & Taxation purposes only and was NOT prepared nor is it suitable for legal, engineering or surveying purposes.



SE1/4 SEC 25 T 6N R35E WM UMATILLA COUNTY

6N3525D
AERIAL PHOTO NO 6P-64

SCALE: 1" = 200'



See Map 6N 35 25C

See Map 6N 36

See Map 6N 35 36A

Revised: 12-11-18

6N3525D