

This map was prepared for Assessment & Taxation purposes only and was NOT prepared nor is it suitable for legal, engineering or surveying purposes.

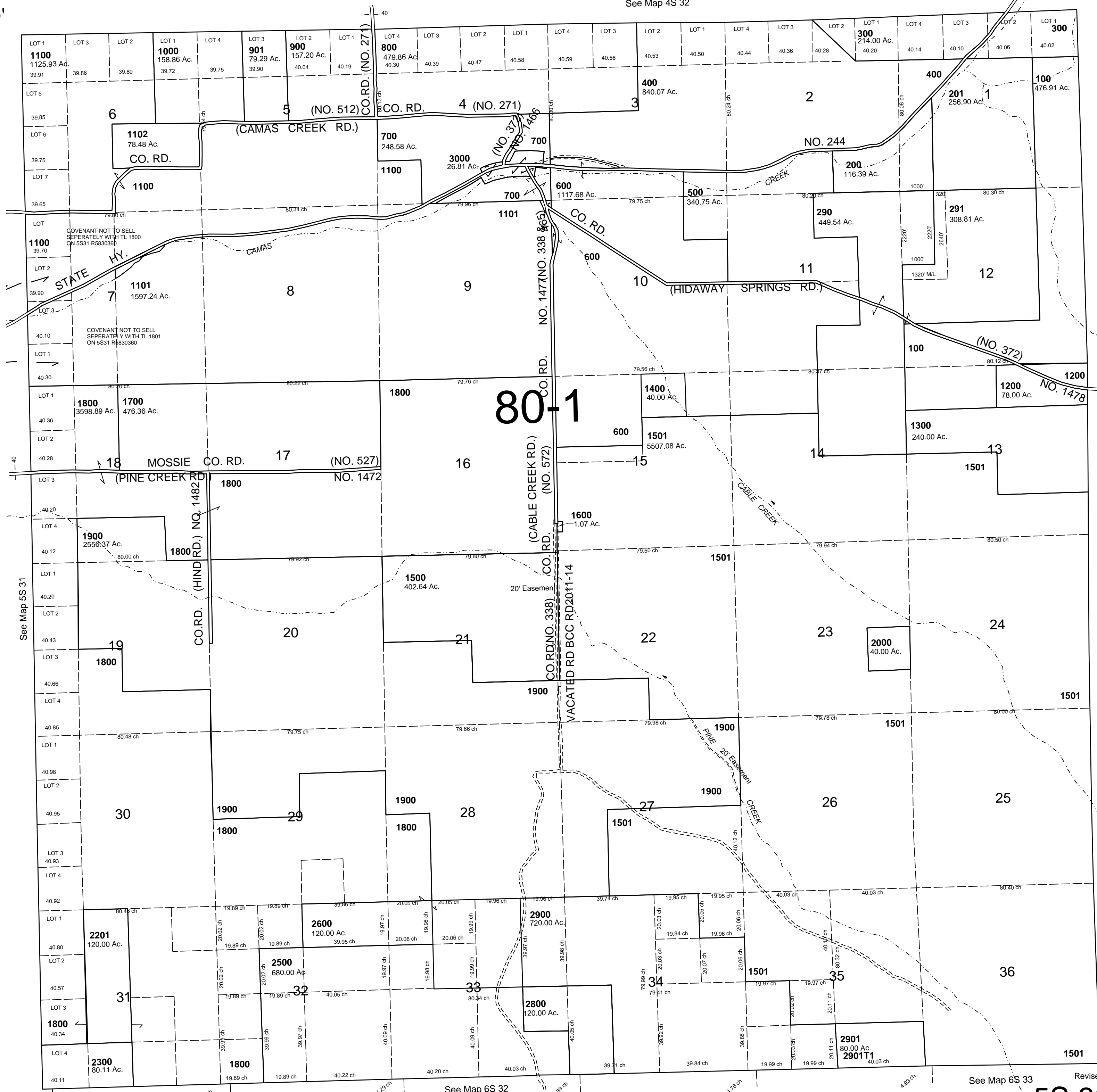
T5S R32E WM UMATILLA COUNTY

5S 32

AERIAL PHOTO NO. 10P 64-68

SCALE 1"=2000'

See Map 4S 32



CANCELLED
TL 2301
2100
2200
2302
2400
2501
2601
2700

See Map 5S 33

See Map 6S 33

Revised:01-23-13

5S 32

See Map 6S 32

See Map 5S 31